

Radian Research, Inc.

Radian Research, Inc.

Installing the latest version of Mobile Suite

Install Guide

**R
A
D
I
A
N**

Radian Research, Inc.
3852 Fortune Drive
Lafayette, IN 47905 USA
Tel: 765-449-5500
Fax: 765-448-4614
www.radianresearch.com

1. Download the latest version of Mobile Suite. This can be obtained by contacting Radian Research, Inc. The downloaded file will be a compressed ZIP file.
2. Connect a compact flash card to the computer which contains the downloaded version of Mobile Suite.
3. Using Windows explorer, browse to the compact flash card and create a directory to store the new version of software. Figure 1 shows a directory named “Mobile Suite Upgrade” which has been created to store the new version after it has been decompressed.

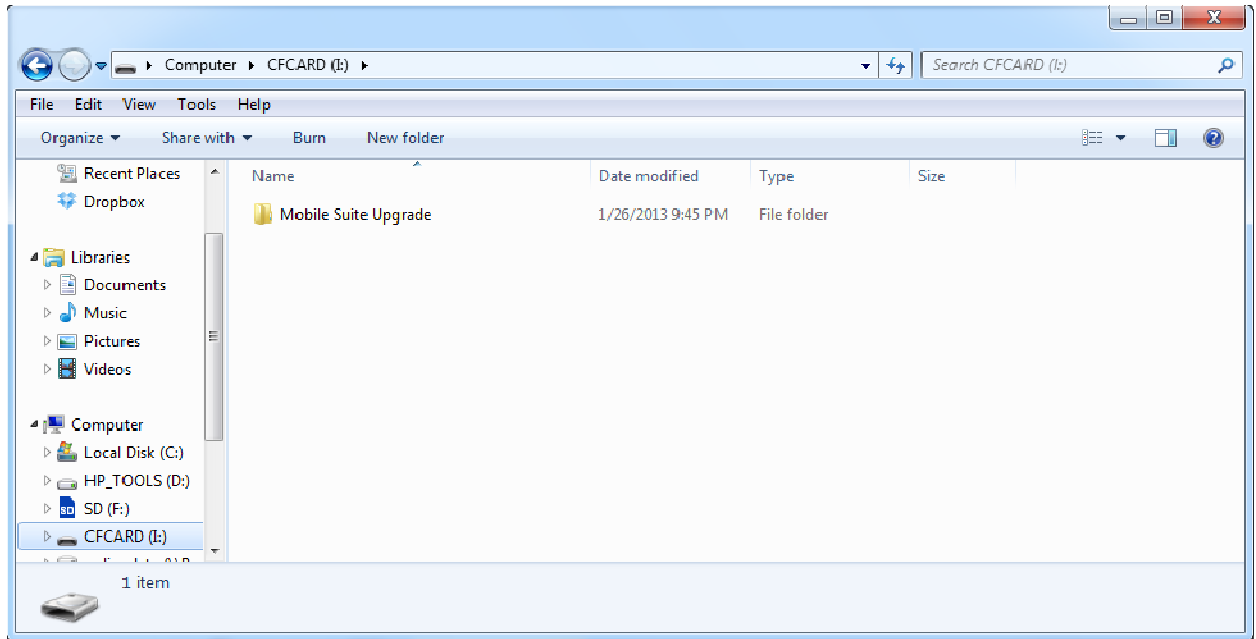


Figure 1

4. On the computer, browse to the location for the downloaded zip file of the new version of Mobile Suite. Open the downloaded zip file and decompress the files into the directory created on the compact flash card in step 3. This will place two directories and their contents onto the

compact flash card. See example figure 2.

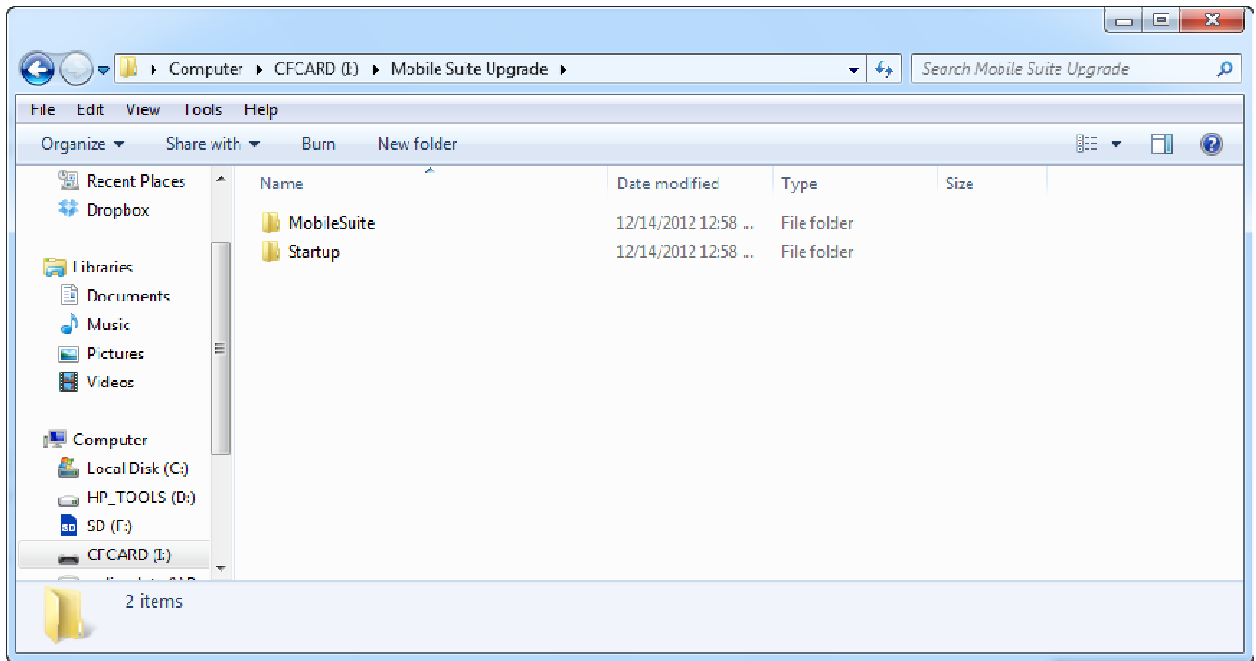


Figure 2

5. Create another folder on the compact flash card named, "Mobile Suite Backup".

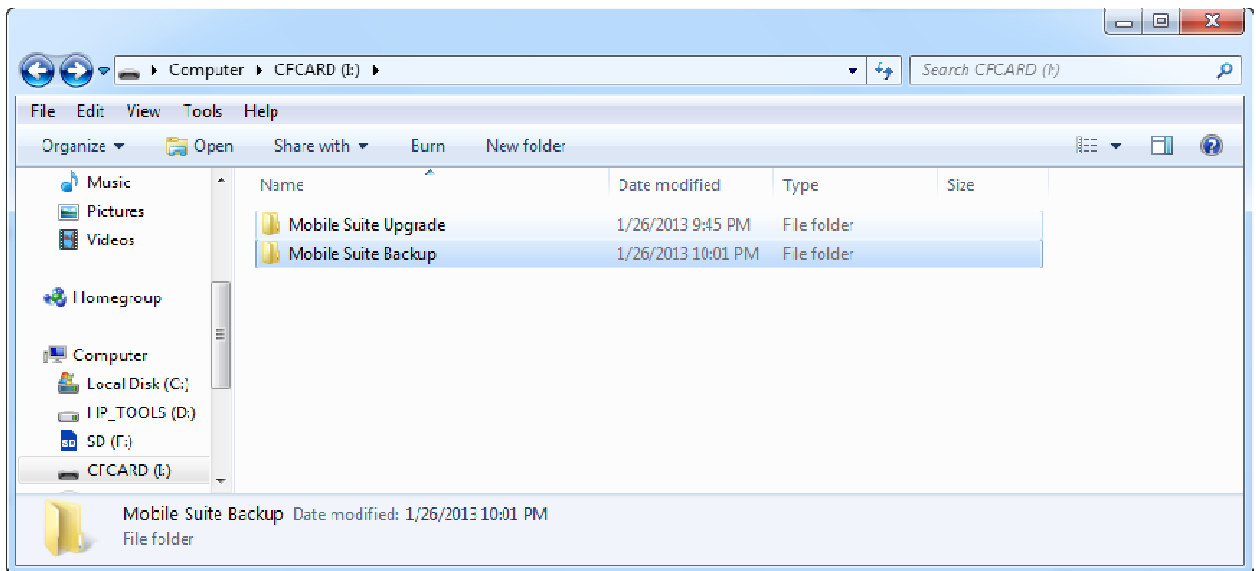


Figure 3

6. Close the explorer window and safely eject the compact flash card from the computer.
7. Apply power to the RD standard and close all open applications.
8. Using the PCMCIA compact flash card adaptor, install the compact flash card into the rear of the RD standard.
9. Determine the version of the Windows CE running on the built in computer. This can be done by looking at the desktop. If the desktop has the "My Computer" icon, proceed to step 17. If

the desktop has the “My Device” icon, continue to the next step.

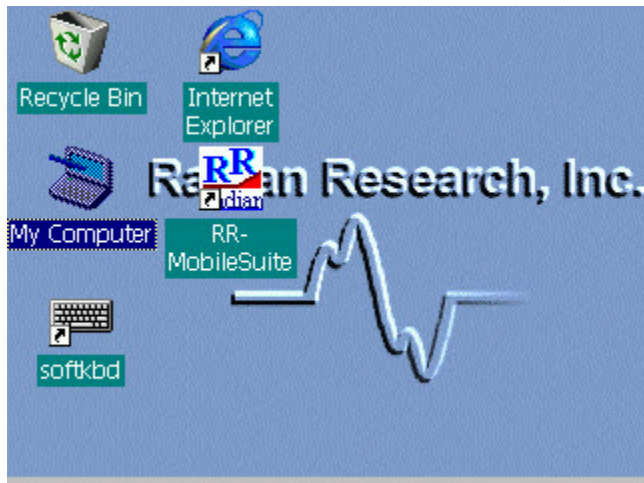
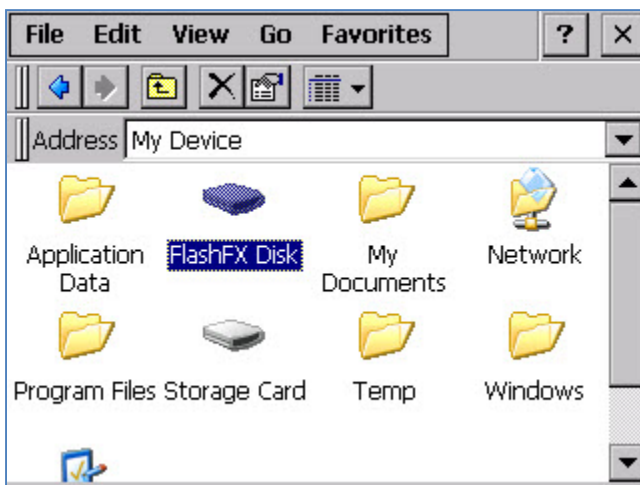
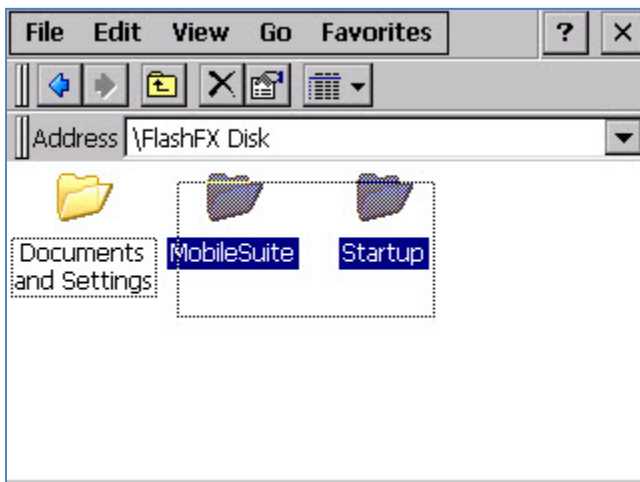


Image of desktop running version 3.0

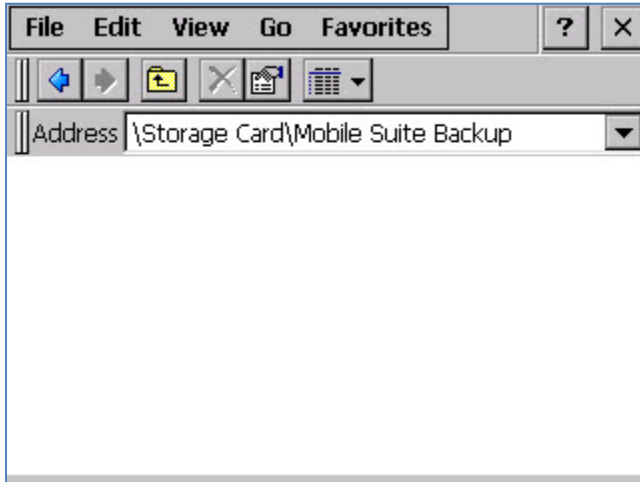
10. On the RD's built in computer, open “My Device” from the desktop. Browse to view the contents of the “FlashFX Disk” folder.



11. Drag and select both the “MobileSuite” and “Startup” folders. On the menu bar, select *Edit | Cut*.



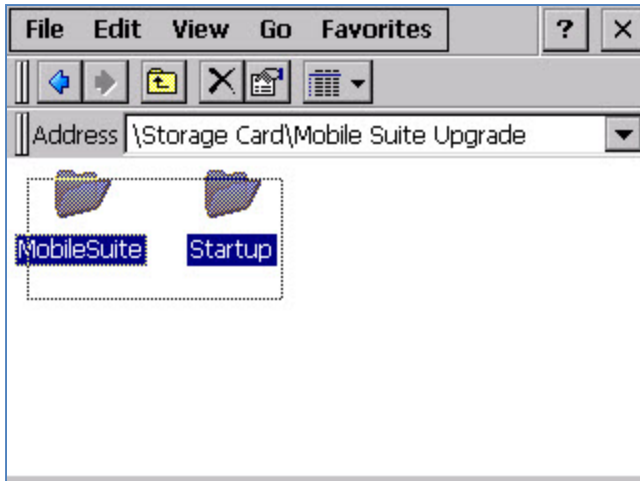
12. Browse up one directory. Browse to the “Storage Card\Mobile Suite Backup” folder. This folder should be empty. **Important Note** - This is the storage location for the backup of the previous version of software. **All tests and saved test results that were stored on the RD’s built in computer will be moved into this folder.**



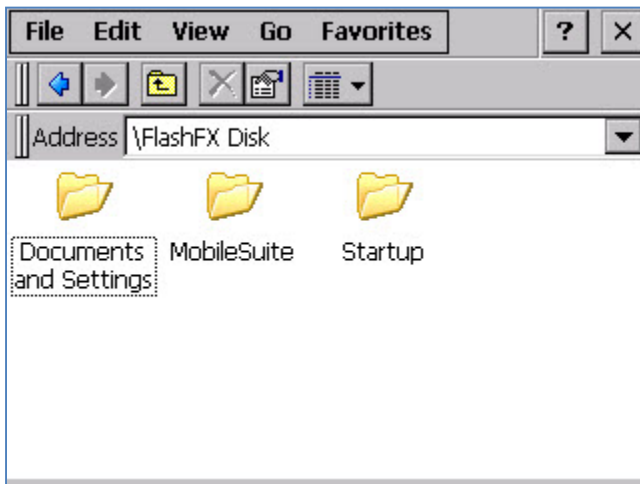
13. Select *Edit | Paste* to create the backup of the existing software. Answer yes to the following message if it appears.



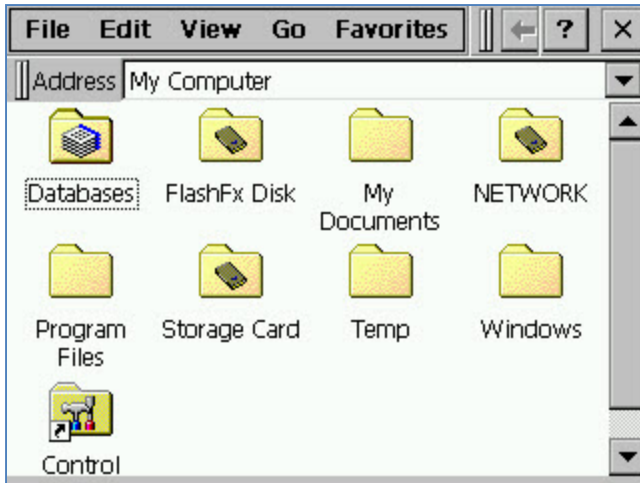
14. Browse up a directory and open the “MobileSuite Upgrade” folder. Select both folders and copy them (*Edit | Copy*).



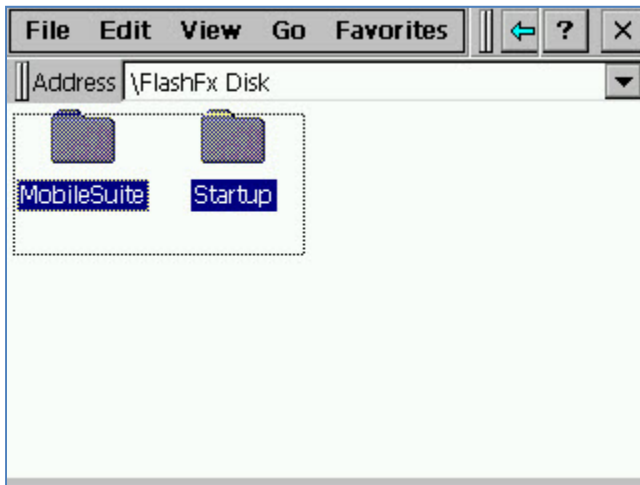
15. Browse up to "My Device" and open the "FlashFX Disk" folder. Select *Edit | Paste*.



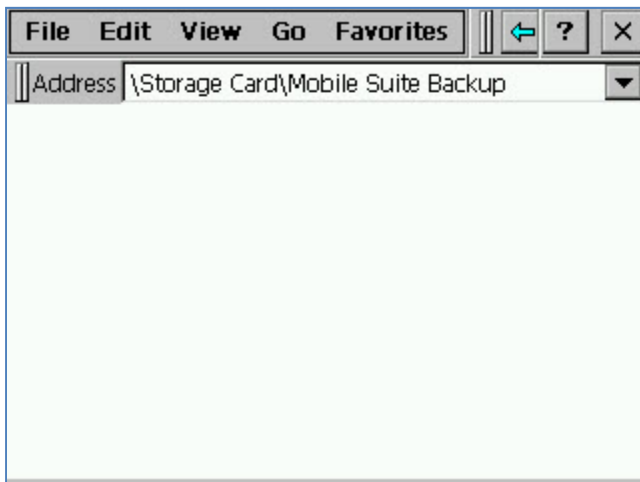
16. The new version of MobileSuite is now ready to use. Close the Explorer window and execute MobileSuite using the RR-MobileSuite icon on the desktop. If needed, individual tests, configurations, or results which had previously been saved, can be copied from \\Storage Card\Mobile Suite Backup\ back into their appropriate locations in the \\FlashFX Disk\MobileSuite directory.
17. On the RD's built in computer, open "My Computer" from the desktop. Browse to view the contents of the "FlashFX Disk" folder.



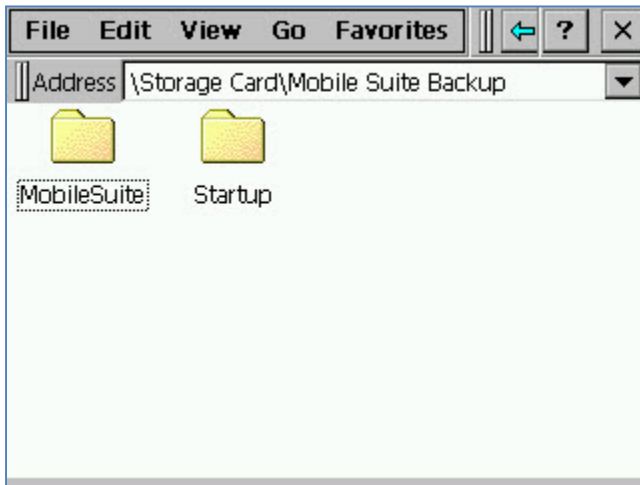
18. Drag and select both the “MobileSuite” and “Startup” folders. On the menu bar, select *Edit | Cut*.



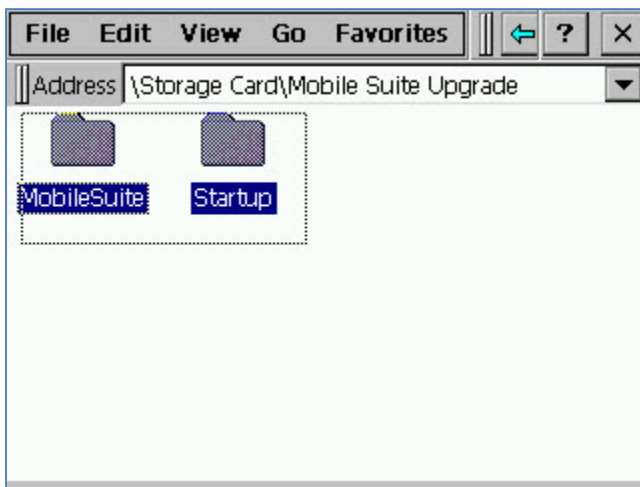
19. Browse up one directory. Browse to the “Storage Card\Mobile Suite Backup” folder. This folder should be empty. **Important Note** - This is the storage location for the backup of the previous version of software. **All tests and saved test results that were stored on the RD’s built in computer will be moved into this folder.**



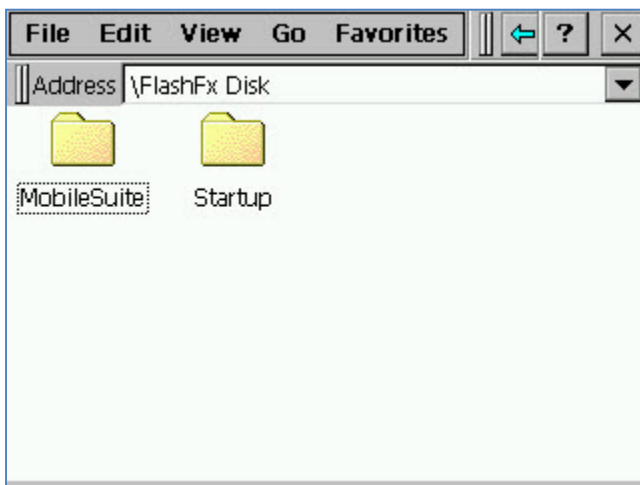
20. Select *Edit | Paste* to create the backup of the existing software.



21. Browse up a directory and open the “Mobile Suite Upgrade” folder. Select both folders and copy them (*Edit | Copy*).



22. Browse up to “My Device” and open the “FlashFX Disk” folder. Select *Edit | Paste*.



23. The new version of MobileSuite is now ready to use. Close the Explorer window and execute MobileSuite using the RR-MobileSuite icon on the desktop. If needed, individual tests, configurations, or results which had previously been saved, can be copied from \Storage Card\Mobile Suite Backup\ back into their appropriate locations in the \FlashFX Disk\MobileSuite directory.