

Upgrading the Firmware in a Radian RM-111 Handheld Automated Comparator

Hardware and Software Requirements

- 1) RM-111 Automated Comparator (Radian part no. 101011)
- 2) RM-111 Link + Software (Radian part no. 120041)
- 3) Compiled *.rdu Firmware File*
- 4) RS-232 Serial Cable (Radian part no. 191070)

*The *.rdu file can be obtained by contacting Radian's Technical Support team at (765) 449-5515

Software Installation

1. Install the RM-111 Link + Application onto your PC or Laptop. The installation CD should auto-run the install wizard – Follow the prompts accordingly.



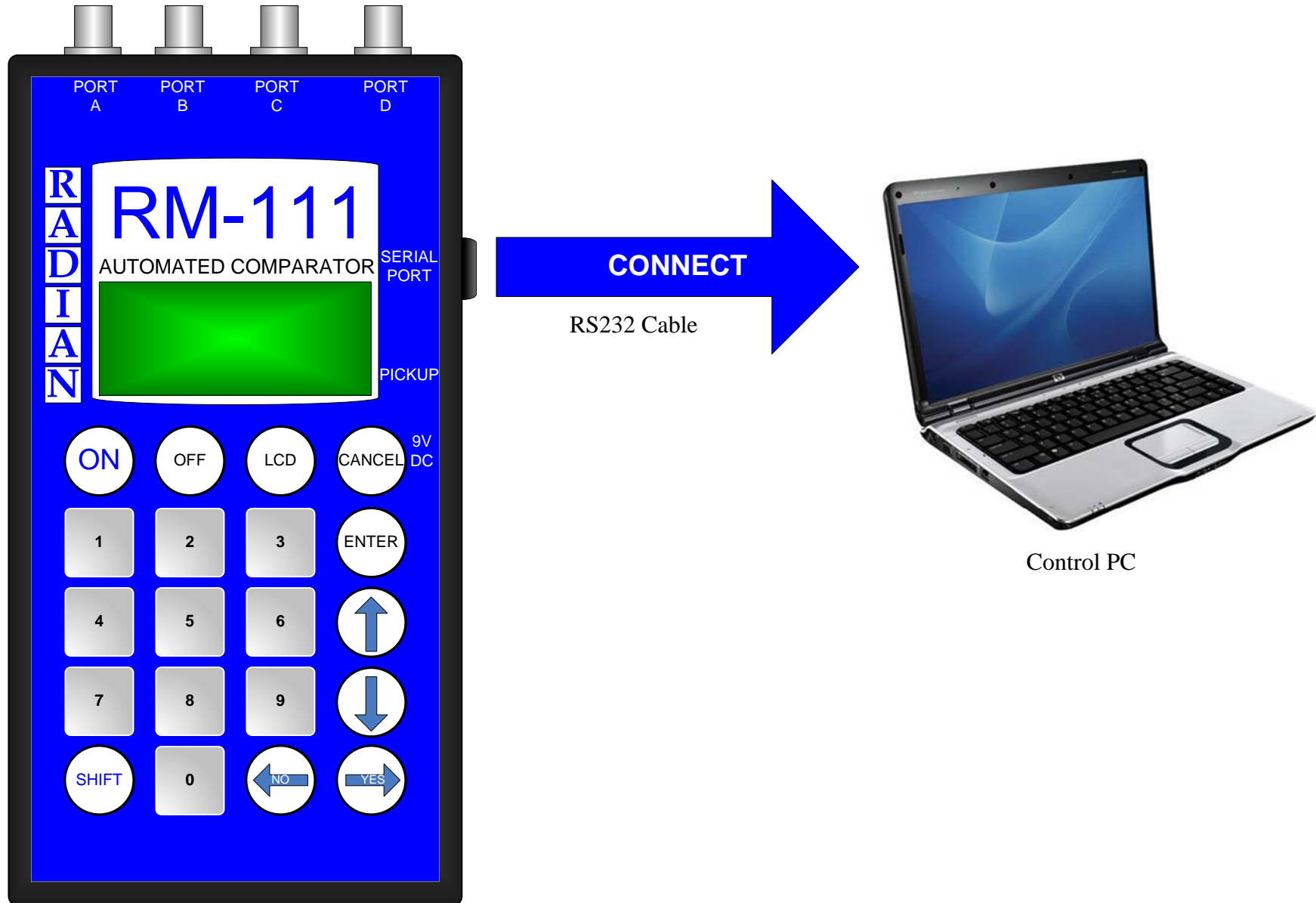
RM-111 Link + Software Installation CD



Control PC

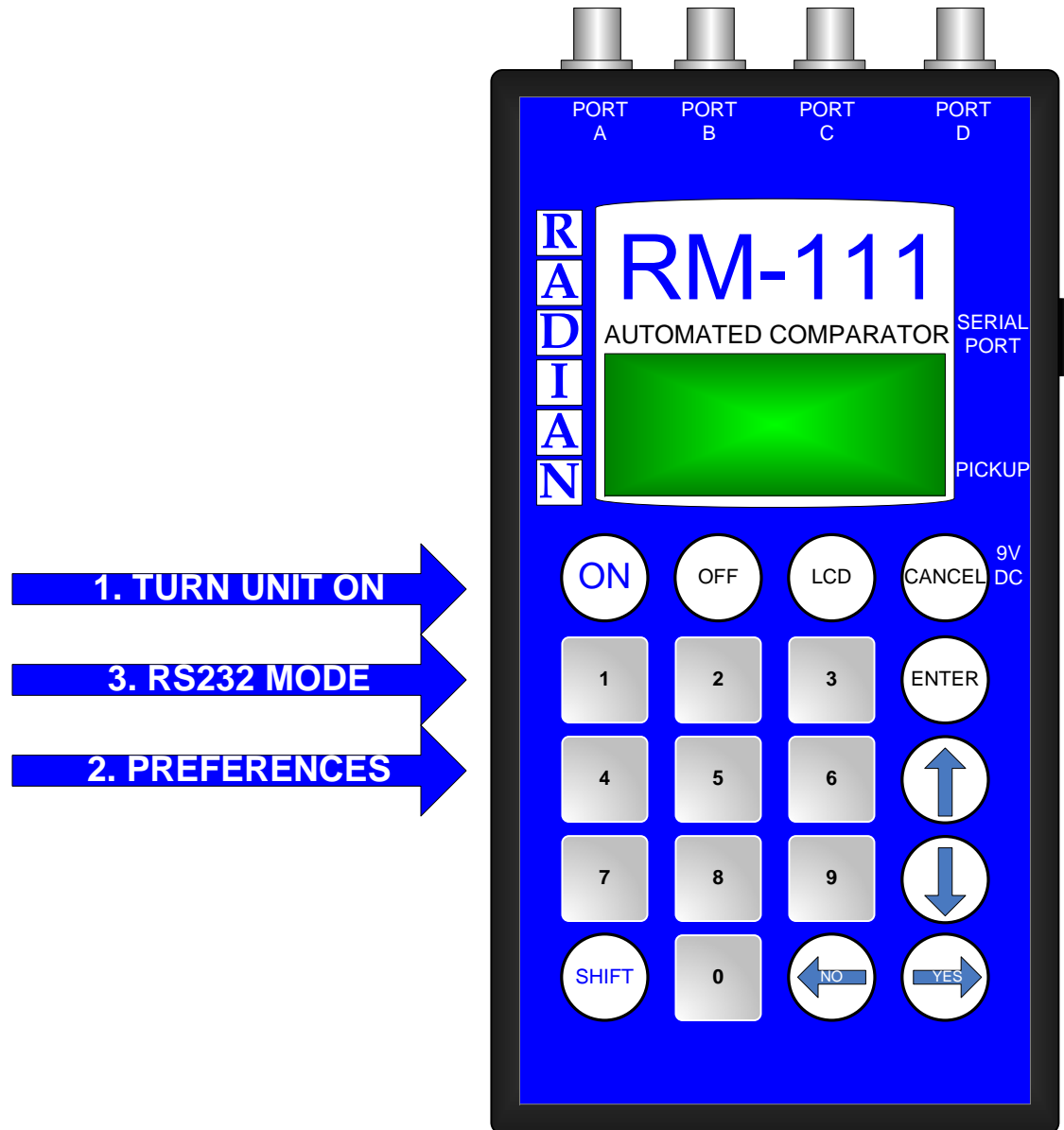
Hardware Connection

2. Connect the RM-111's SERIAL PORT to the control PC via the RS-232 serial cable.



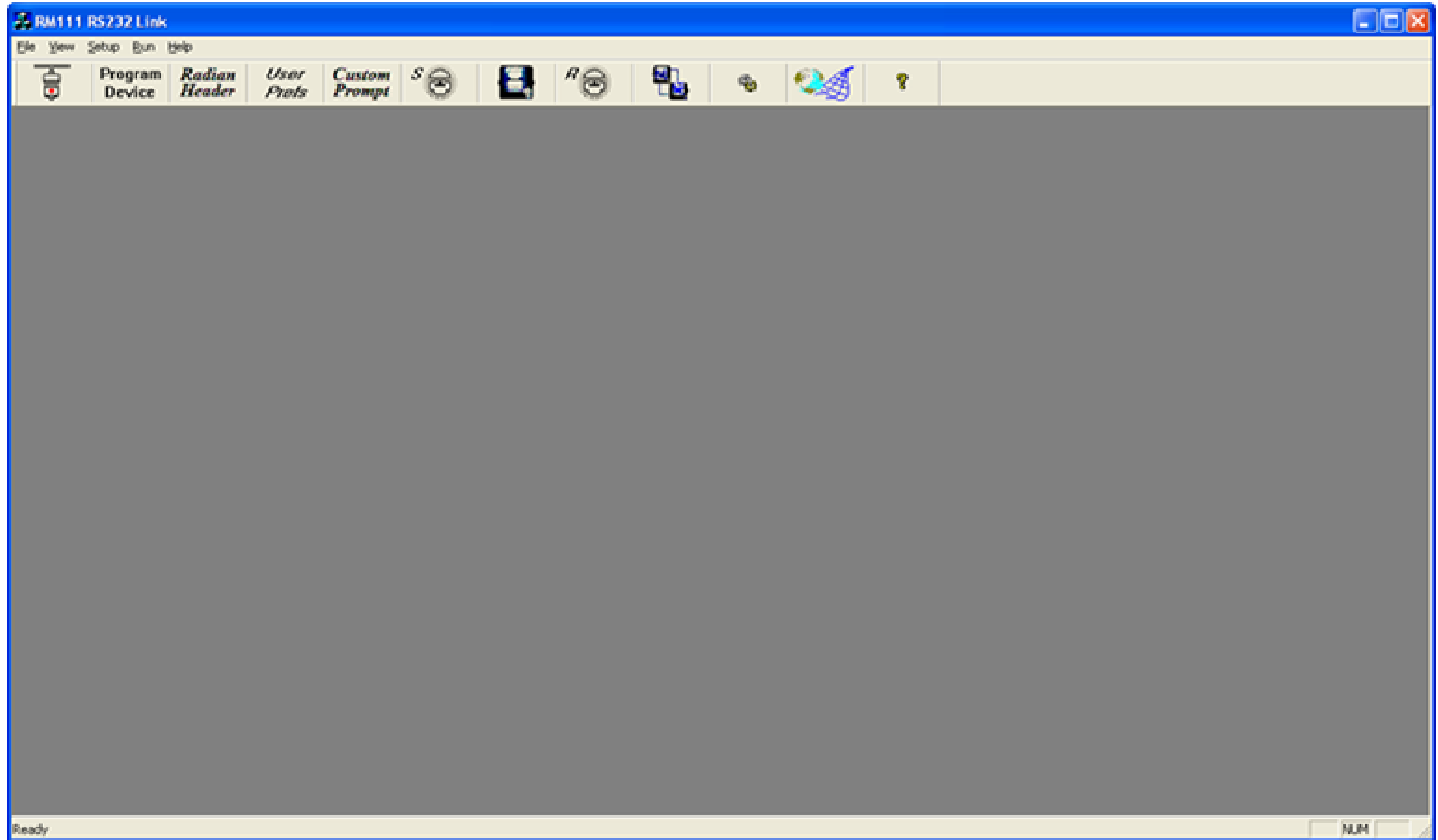
Firmware Upgrade

3. Power on the RM-111 by pressing the ON button
4. From the main menu, browse to the preferences sub-menu by pressing the 4 button (4 PREFERENCES)
5. From the preferences sub-menu, place the unit in the RS232 mode by pressing the 1 button (1 RS232-Mode)



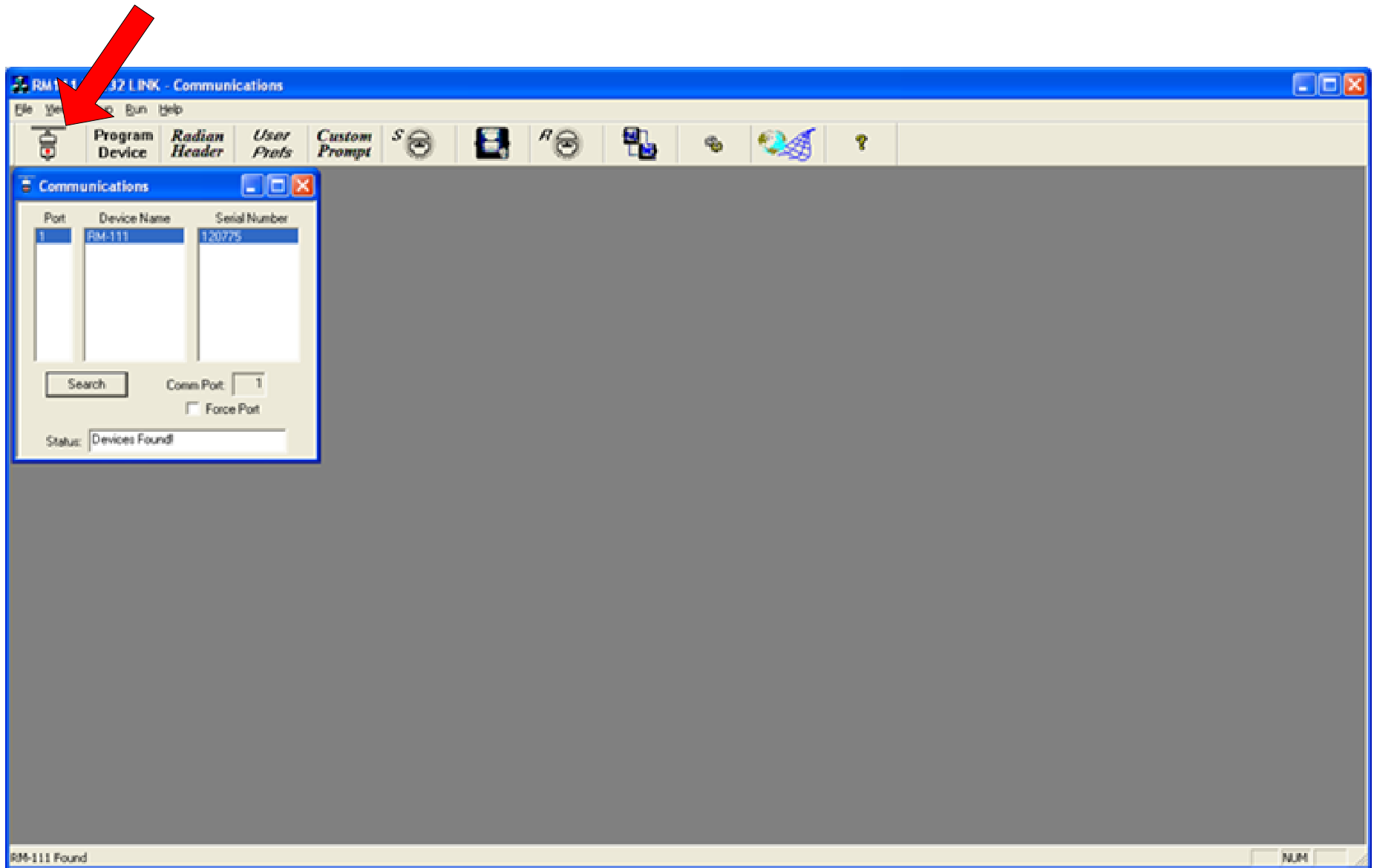
Firmware Upgrade

6. Save the compiled *.rdy firmware file on the control PC.
7. On the control PC, open the RM-111 Link + application



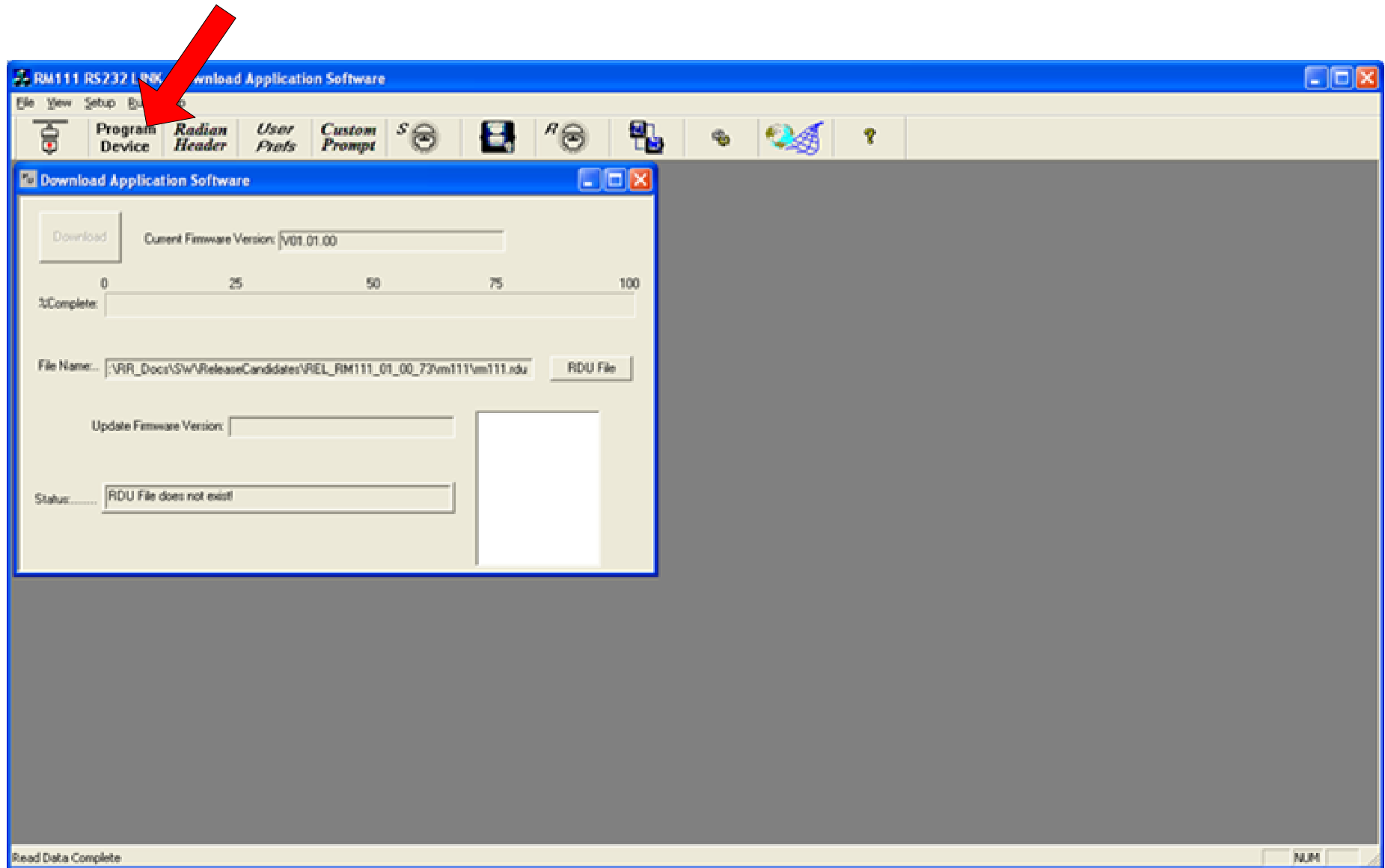
Firmware Upgrade

8. Connect to the RM-111 by selecting the *Connect RM-111* button in the toolbar
9. Select *Search*



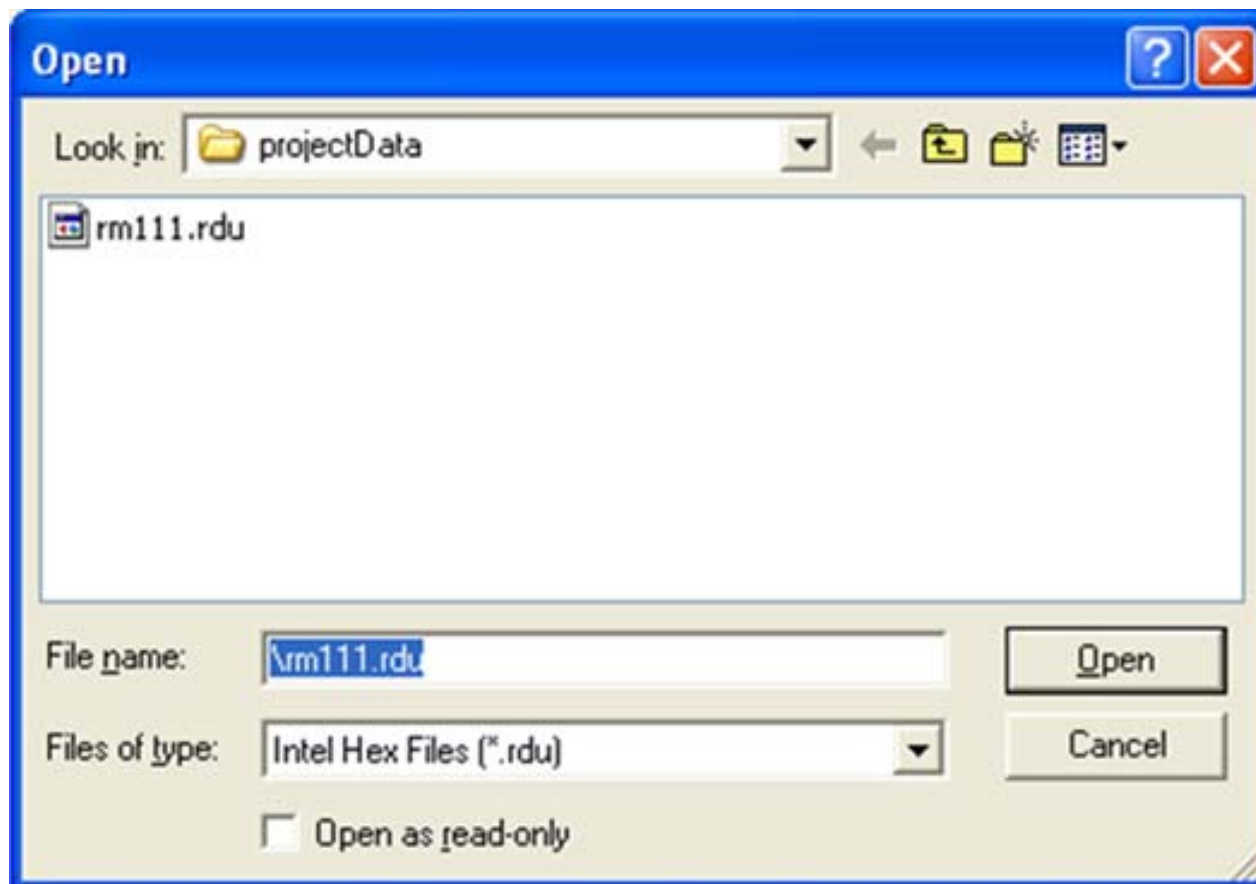
Firmware Upgrade

10. Select the *Program Device* button on the toolbar



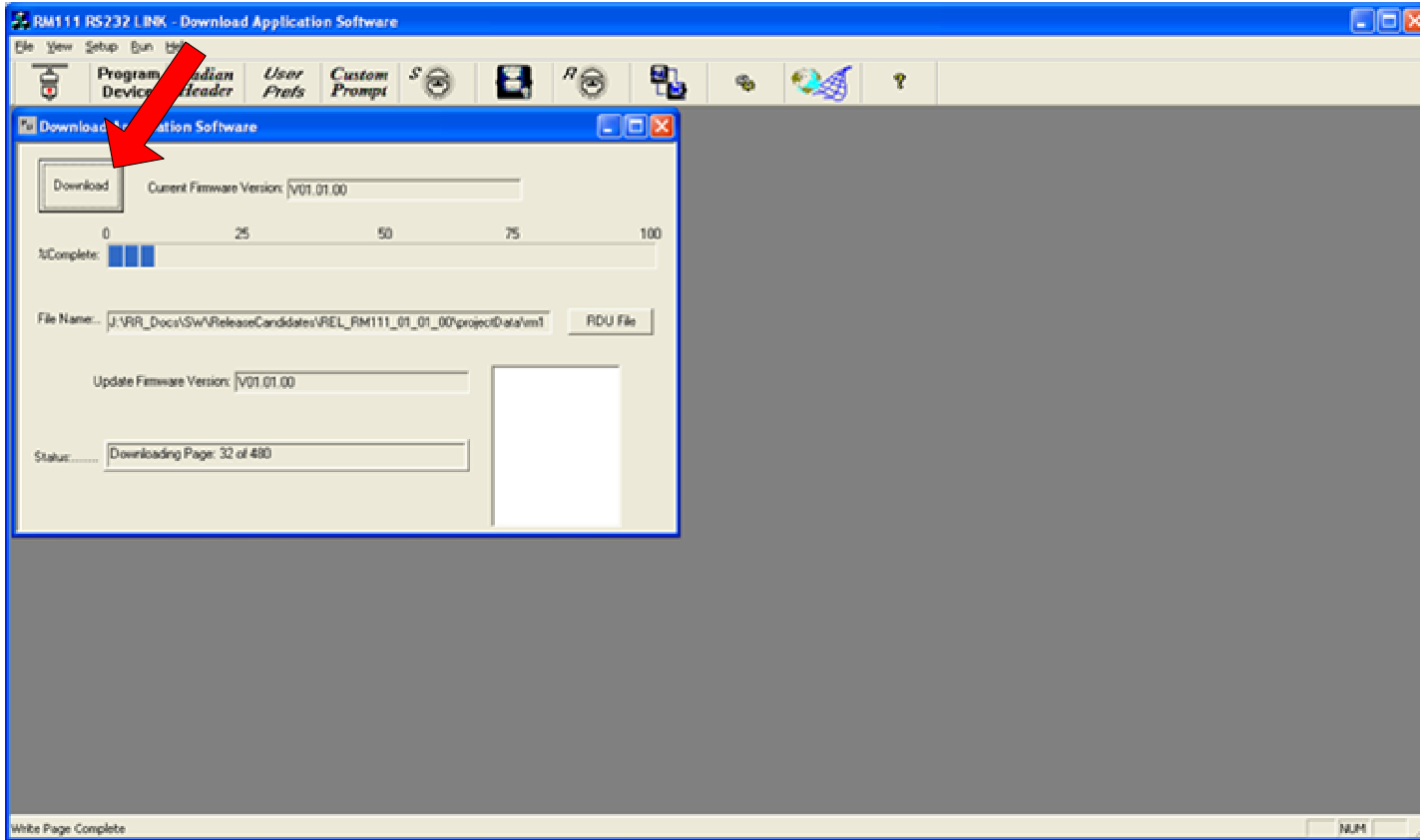
Firmware Upgrade

11. Select the *RDU File* button
12. Browse to and load the previously saved *.rdu file



Software Setup

13. Select the Download button to start the firmware upgrade



Limited resources or need a solution quickly?

If you need additional information about your project just contact us, we are here to help. We can support you at any level from telephone support, or on-site solutions for a reasonable price. Contact us at radian@radianresearch.com or call 765-449-5500. Be assured that we want to be your partner in success!