

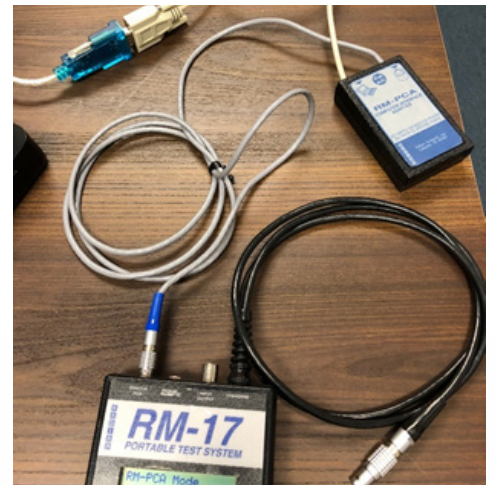
Application Note

RM-17 Transfer Configuration Between Handhelds

Warning: Please ensure that all test results have been backed up from the devices before proceeding!

1

Older Handhelds: Using a RM-PCA Computer Interface Adapter, attach the “Printer PCA” Port to a Serial Connection (or Serial to USB) on the computer. Ensure that the Computer Interface Adapter has a good 9V battery installed and is in the “On” position.



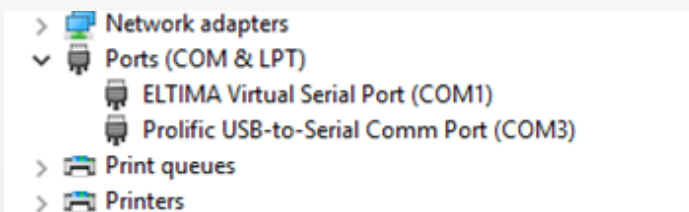
Newer Handhelds: Use the Serial Port on the handheld to connect to a Serial Connection (or Serial to USB) on the computer.

2

Put the Handheld in PCA/RS232 Mode by Pressing the “On” Button -> Pressing 4 (Preferences) -> Pressing 1 (PCA-Mode/RS232 Mode). Leave that screen open for the duration of this process.

3

On the computer, open “Device Manager” and ensure that a new device shows under “Ports (COM & LPT)”. In this example, it shows as COM3.



Open the PCA-Link Software. The newest version should be v2.40 and that can be found under Help -> About. If your software is not up to date, a link to the update can be found below:

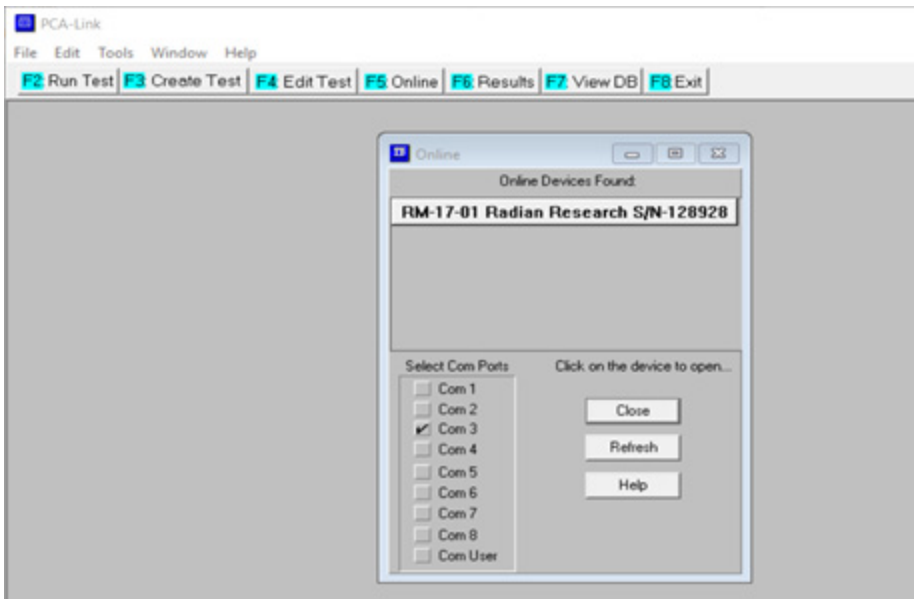
http://www.radianresearch.com/upgrade/PCALink2_40.zip

Once in the PCA-Link software, navigate to Tools -> Options. Ensure that the “Select Com Ports” match what was found in Device Manager on Step 3. Also ensure that the RM-PCA Cable Types matches the hardware of the handheld. In this example, Rev 2 cables are used and that is confirmed by the picture in Step 1.



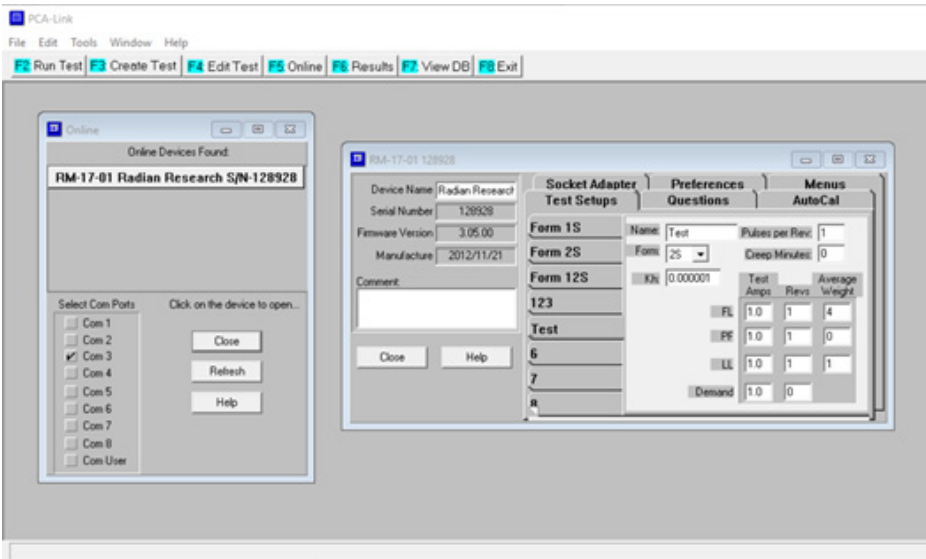
Press “OK” and then press “F5: Online.” The device should populate in the new window as shown. Please note: If no device populates, there may be a connection problem between the handheld and the computer. To troubleshoot, replace the battery on the handheld and try again. Next, try replacing the battery in the RM-PCA Computer Interface Adapter, power cycle the adapter, then try connecting again.

If problems persist, contact Radian Technical Support at 765-449-5576.



7

Click on the Device under “Online Devices Found” and a new window will appear.



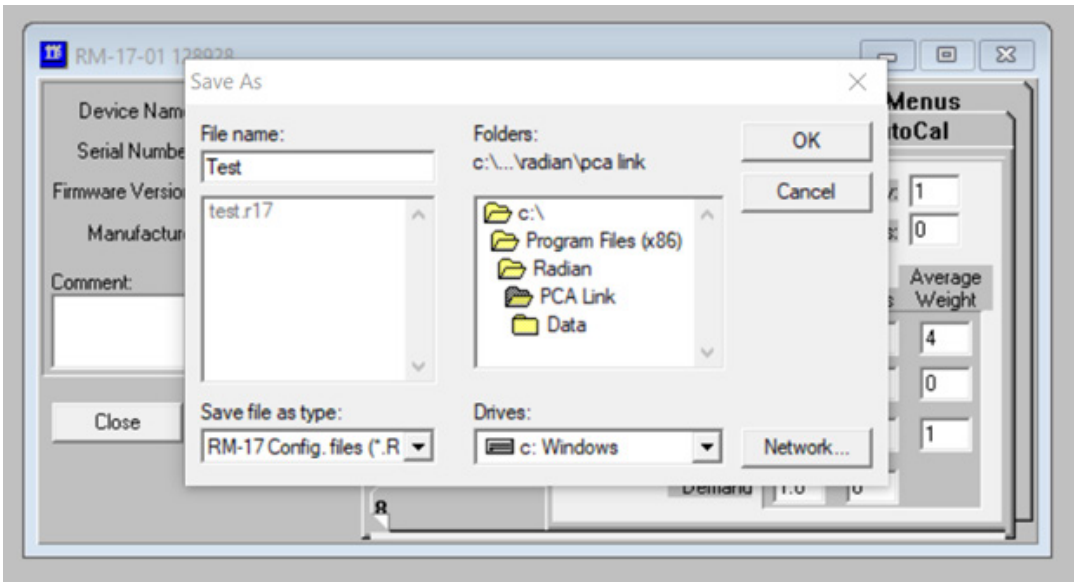
8

Edit the Test Setups and Custom Questions as desired to transfer to the other handhelds. An additional guide for creating custom questions can be found at the link below:

<http://www.radianresearch.com/upgrade/RM17CustomQuestions.pdf>

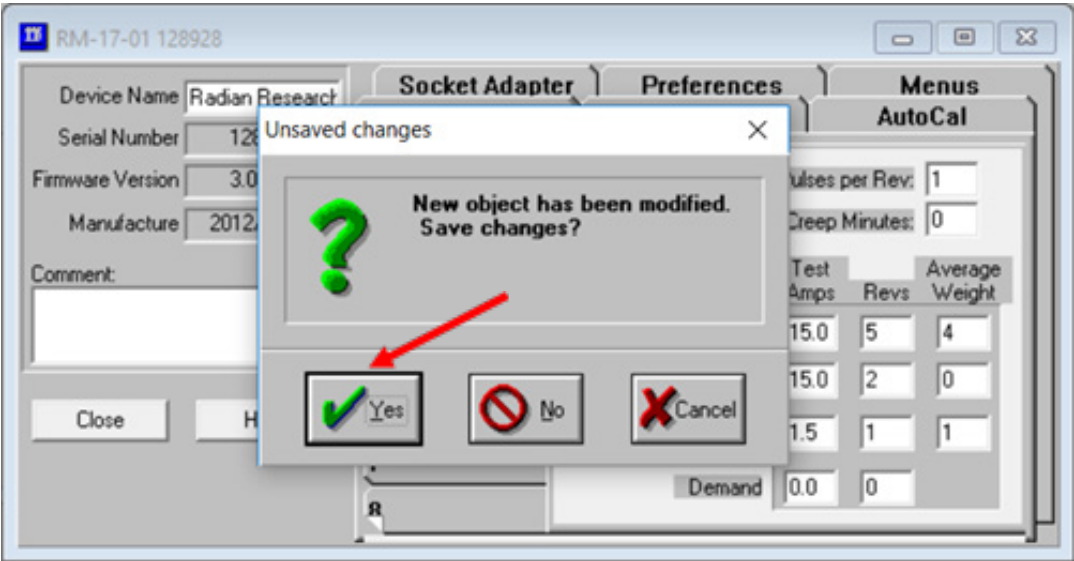
9

Once this has been completed, select File -> Save As. It should attempt to save the configuration as a RM-17 Configuration File as shown below. In this example, the configuration file is named “Test.” Press “OK” to Save the configuration.



10

To Save the changes made for this device, press the “X” button on the Device window -> select “Yes” -> Select “OK.” It will prompt you when the Data is Saved.



11

Disconnect the existing RM-17 Handheld and connect a new handheld using the procedure from steps 1 – 7.

12

Once the new device window is open, navigate to File -> Open. Ensure that “RM-17 Config. Files” is selected under “List files of type:”. Select the file name that you created earlier and press “OK”.

13

Once the Configuration File window is open, navigate to File -> Transfer. Select “OK” and “OK” and a window should appear saying “Data Saved” when complete.

14

As before, close out of the device window using the “X” button and save if prompted.

15

The configuration from the first RM-17 Handheld should now be on the second RM-17 handheld. This can be verified by looking at the test setups on each handheld and verifying that they are the same.

If you would like to repeat this process over multiple RM-17’s, you will simply need to repeat steps 11 – 15. If you have any additional questions/concerns about this, contact Radian Technical Support at 765-449-5576 or technicalsupport@radianresearch.com