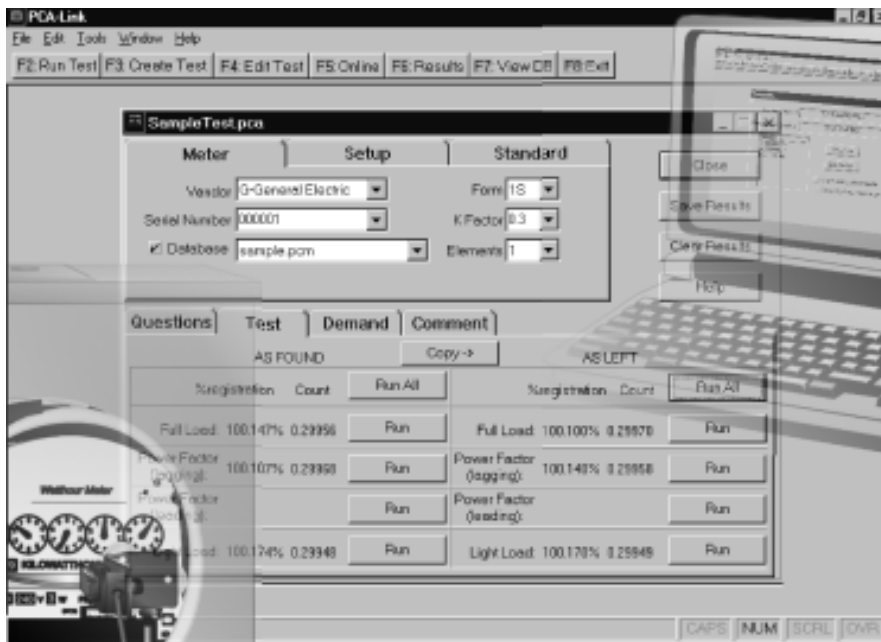


Product Bulletin 4400



Eliminate Manual Calculation
Eliminate Paper Recordkeeping
Maintain Detailed Test Histories

Extensive Testing Abilities
Light Load
Full Load
Lagging Power Factor
Leading Power Factor
kW Demand
Creep
As-Found, As-Left
Individual Element
Singlephase or Polyphase
Weighted Average

OVERVIEW

PCA-Link Meter Testing Software is the most versatile software package available for testing of wattour billing meters. Whether in the field or at the meter shop, PCA-Link combines automated meter testing with powerful data management to optimize your entire meter testing operation.

In the field, PCA-Link Meter Testing Software automates field testing of induction or electronic wattour billing meters by eliminating manual data entry, results calculation and recordkeeping. Step by step facilitation of testing procedures enhances testing consistency while reducing training requirements. Multiple test configurations can be created and saved. Meter test parameters are entered with minimal keystrokes from a single test screen. The ability to view and create links to external database files for automatic lookup and fill-in of information during the testing process further enhances efficiency and reduces the chance of operator error.

In the meter shop, PCA-Link can serve multiple key functions. With the appropriate energy sources and test accessories, PCA-Link can be used to shop test any wattour billing meter. Test results data from multiple field users of PCA-Link can be transferred to a single meter shop version for optimum consolidation of field test data. Complete test histories of all meters tested are maintained. Data can be saved in either standard ASCII or ODBC compliant database format. This feature provides maximum flexibility for exporting test data to other applications or computing platforms for further storage or manipulation.

Testing efficiency with PCA-Link is maximized by the use of Radian Standards and Test Accessories. Optimum performance is

achieved by combining PCA-Link with the Radian RM-110 Automated Comparator interfaced to a computer using an RM-PCA Computer Interface Adapter. Further test automation is attained by using Radian sensors for picking up calibration pulses from disk rotation, KYZ output, or infrared calibration LED. Further compatibility is achieved by supporting the popular RM-1N Solid State Meter Interface.

PCA-Link is an invaluable complement to two key Radian field testing devices, the RM-17 Portable Test System and the RM-110 Automated Comparator. Using the RM-PCA Computer Interface Adapter, PCA-Link provides extensive control over virtually every aspect of RM-110 or RM-17 functionality. Create, save and download test configurations. Upload test result data from multiple RM-17 and/or RM-110 units to ensure similar data storage regardless of field test device used.

PCA-Link also adds functionality to both the RM-17 and RM-110. Supervisory control is enhanced by the ability to disable certain menu items from each device preventing such activities as results deletion or test setup editing. Custom user input fields can be created with PCA-Link and downloaded to either field device. These fields then appear during testing prompting the user for entry of desired information which then becomes a part of the test results data file. Both of these features are enabled solely by using PCA-Link.

The extensive functionality of PCA-Link is tempered by exceptional ease of use which is optimized with a user-friendly Windows interface. Comprehensive on-line Help facilities also detail every aspect of the software.

PCA-Link™ Meter Testing Software

PCA-Link Meter Testing Software is the definitive software package for testing of watthour billing meters. Whether in the field or at the meter shop, PCA-Link combines automated meter testing with powerful data management to optimize your entire meter testing operation.



Comprehensive Data Management

PCA-Link stores and maintains results from all tests performed on a billing meter. These results can be acquired by directly testing with PCA-Link or by uploading data from field test devices such as the Radian RM-17 or RM-110. Results are easily found, viewed and printed with PCA-Link. Results are stored according to meter serial number and are time and date stamped for optimum tracking of test history. Support for up to 100 custom fields per test configuration allow unprecedented flexibility in the nature of data maintained. Data can be saved in either ASCII data format or in Open Database Compliant dBASE IV format. This feature provides maximum flexibility for exporting test data to other applications or computing platforms for further storage or manipulation.

Flexible Compatibility

Measurement accuracy and testing efficiency is maximized by the use of Radian Standards and Test Accessories with PCA-Link. Optimum performance is achieved by combining PCA-Link with the Radian RM-110 Automated Comparator interfaced to a computer using an RM-PCA Computer Interface Adapter. Greater test automation is attained by using Radian sensors for picking up calibration pulses from disk rotation, KYZ output, or infrared calibration LEDs. Further compatibility is achieved by supporting the popular RM-1N Solid State Meter Interface. In addition, support for other standards and test accessories is achieved with a manual testing mode.

PCA-Link Highlights

- **Automate testing, calculation and record keeping**
- **Maintain detailed test histories**
- **Test light load, full load, kW demand, lagging/leading power factor and creep**
- **Test as-found, as-left, and individual elements**
- **Singlephase or polyphase**
- **Extensive RM-110 and RM-17 support**
 - Upload test data
 - Create, store and download test setups
 - Disable menu items
 - Create custom fields
- **Calculate % registration or % error**
- **Save in standard ASCII or dBASE IV format**
- **User definable test configurations with custom field support**
- **Password protection of test configurations**



RM-17 and RM-110 Optimization

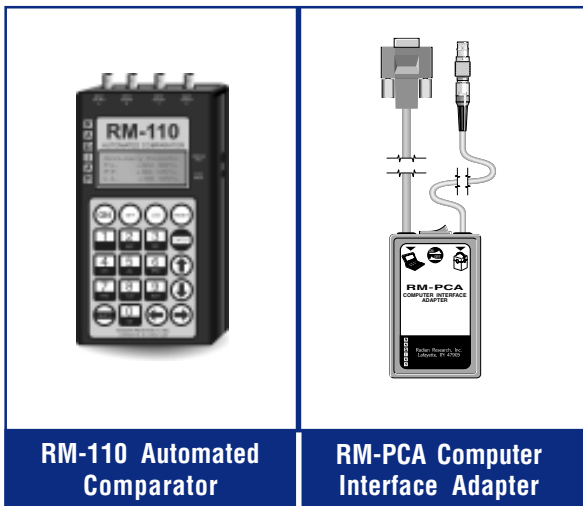
PCA-Link optimizes the use of two key Radian field testing devices, the RM-17 Portable Test System and the RM-110 Automated Comparator by providing extensive control over every aspect of their functionality. View and edit all device parameters. Create, save and download test configurations. View, sort, delete or upload test result data from multiple RM-17 and/or RM-110 units. PCA-Link can also directly control and facilitate testing with the RM-17 and RM-110. The PCA-Link/RM-17 combination creates a compact, computer driven test board for testing residential meter forms. The PCA-Link/RM-110 combination complements Radian standards and test accessories for upgrading load boxes and meter shop test boards to attain optimum testing accuracy and efficiency.

Add Extra Features

PCA-Link adds extra features to both the RM-17 and RM-110. The ability to disable select menu items from each device enhances supervisory control. This feature can be used to prevent user editing of test setups, results data or key device parameters such as time/date. Custom user questions can be created with PCA-Link and downloaded to either device. These questions then become user prompts whose answers are part of the test results data file. PCA-Link also allows a user to customize weighted average proportions. Additionally, as-found and as-left testing is enabled when using a stand-alone RM-17 or RM-110 via an intelligent upload feature in PCA-Link. These extra features are enabled solely by using PCA-Link, making it an invaluable complement to either the RM-17 or RM-110.

Testing Accessories

PCA-Link™ Meter Testing Software



RM-110 Automated Comparator

RM-PCA Computer Interface Adapter



RM-17 Portable Test System

Accessories Available

- RM-110 Automated Comparator
- RM-PCA Computer Interface Adapter
- RM-1N Solid State Meter Interface
- RS-770 Meter Adapter
- RM-1H Optical Pickup for Infrared
- RM-KYZ Pulse Input Adapter
- RM-DS Meter Disk Sensor

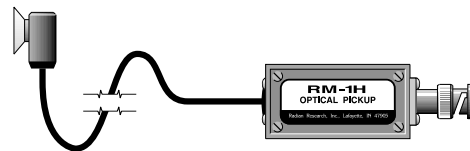
Available Configurations

PCA-Link	PCA-Link Software with RM-PCA Computer Interface Adapter (specify WIN 95/NT or WIN 3.x versions)
Link Software	PCA-Link Software Only (specify WIN 95/NT or WIN 3.x versions)

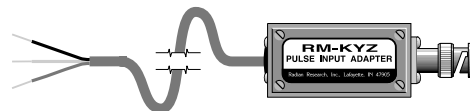
Computer System Requirements

MS-DOS compatible PC running either Windows 95/NT or Windows 3.x
 Approximately 10 Megs of hard disk space available
 One RS-232 serial port for RM-PCA Computer Interface Adapter

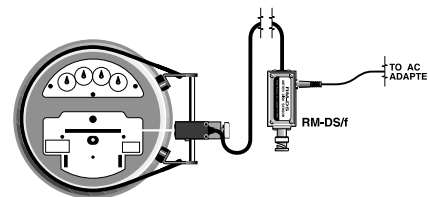
Pulse Sensors



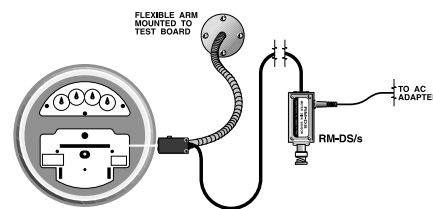
RM-1H Optical Pickup for Infrared LED
 RM-1Hv for Visible LED



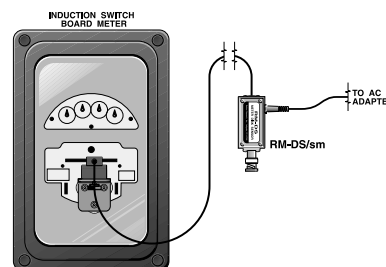
RM-KYZ Pulse Input Adapter



RM-DS/f Meter Disk Sensor (field mount version)



RM-DS/s Meter Disk Sensor (shop mount version)



RM-DS/sm Meter Disk Sensor (suction mount version)