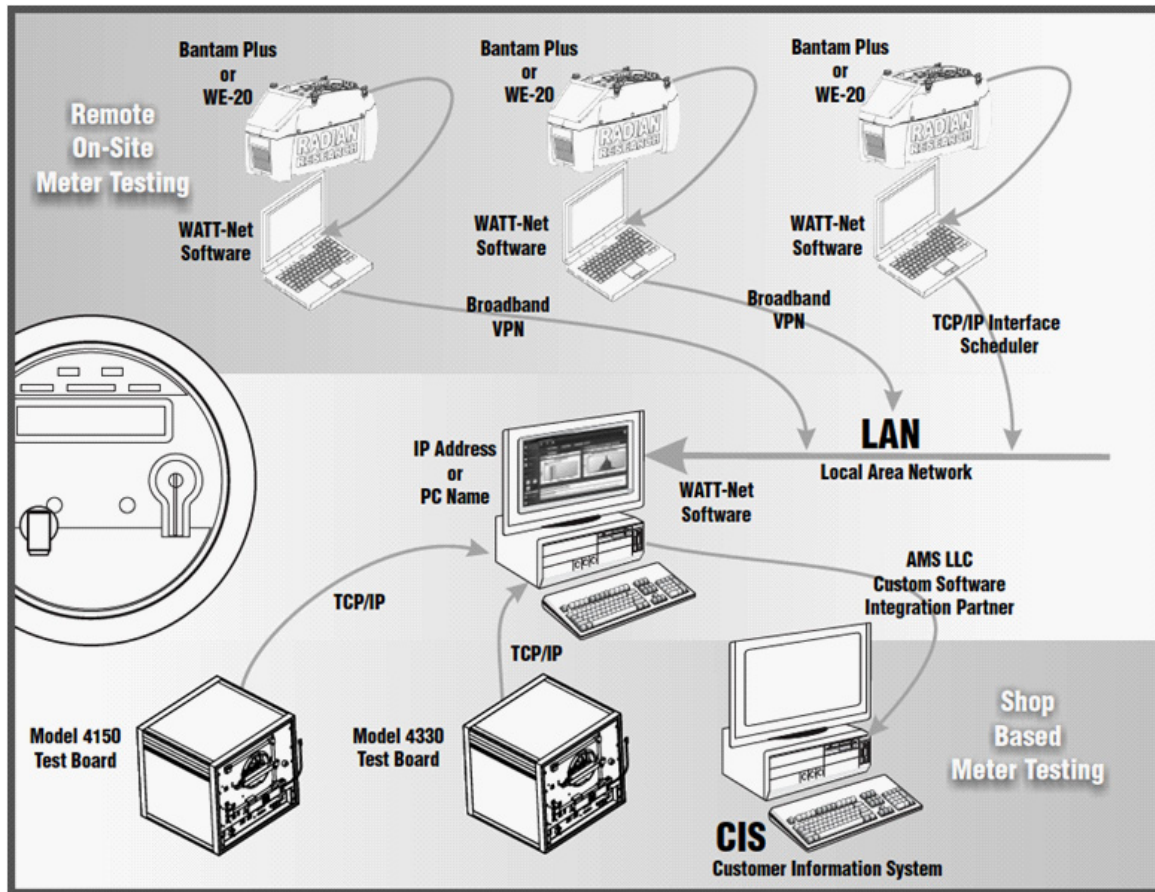


# Bantam Plus/WE20 Automated Test Data Synchronization

- *Required Equipment: Bantam Plus/WE20, Field Laptop, Shop PC*
- *Required Software: Winboard Embedded (Bantam Plus/WE20), WATT-Net (Provided with Bantam Plus/WE20)*

## Application Note



The Radian Research Bantam Plus/WE20 has a unique integrated feature that makes it the ideal solution for field meter site testing. With little setup required, the Bantam Plus/WE20 can easily be configured to push test results back to your main office in an automated fashion. The only requirement outside of the provided software and hardware is that the local PC be connected to the internet with access to your company's local WATT-Net database. A simple VPN, LAN or WAN connection would resolve this requirement. The data is synchronized using the powerful WATT-Net Database Software and its ability to export results to an external WATT-Net Database using a Secure TCP/IP connection. Test Data can be synchronized automatically hourly, daily, weekly or at anytime with the click of a button.

## Configuration

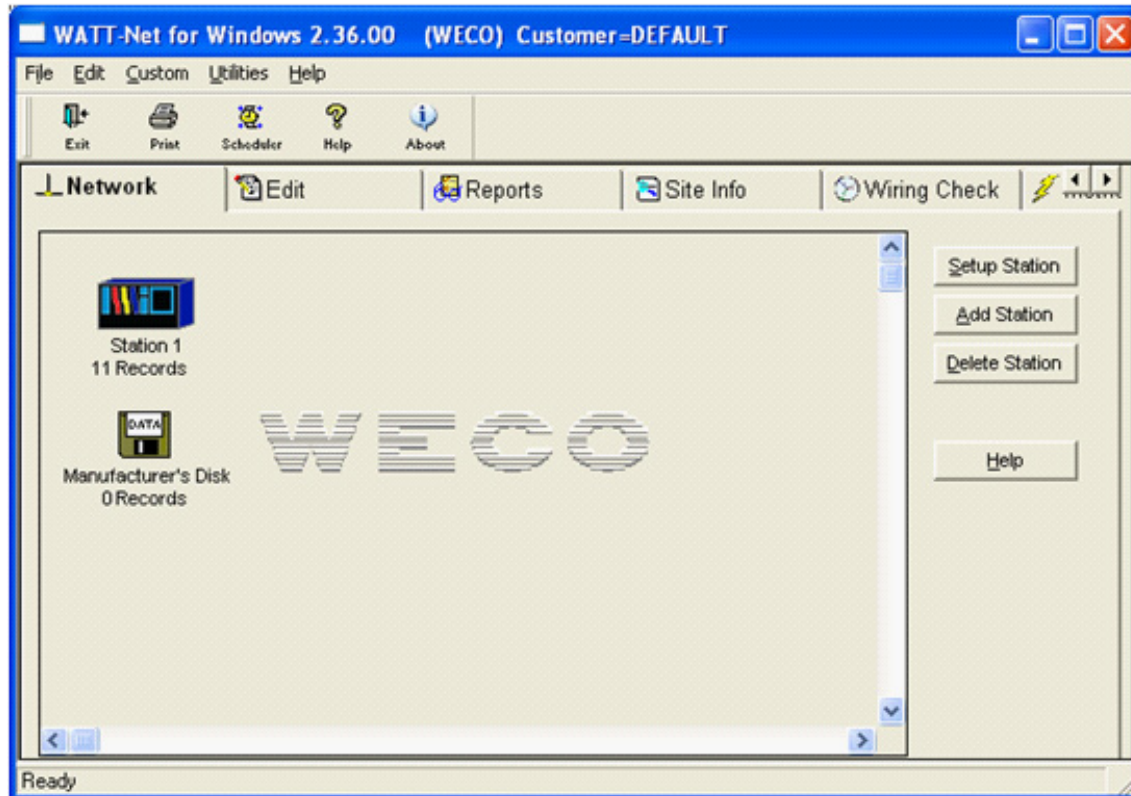
The following document provides details for configuration of WATT-Net and Bantam Plus/WE20 software for the automated synchronization.

Configuration instructions presume a new WATT-Net and Winboard Embedded install with default installation settings.

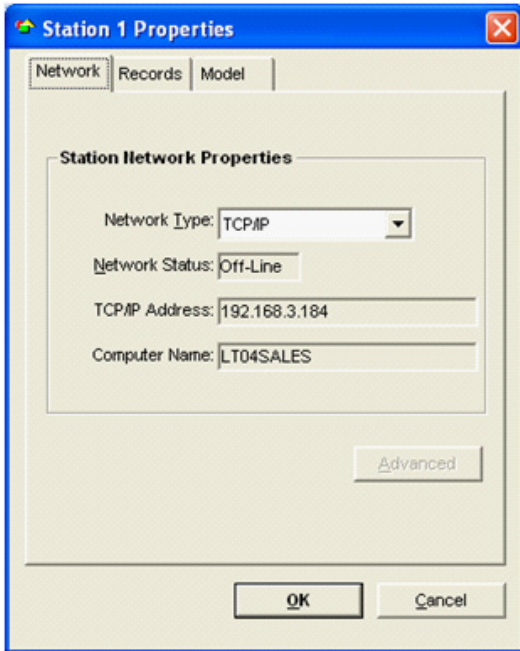
### Step 1

Configure field PC WATT-Net Database to accept a TCP/IP connection.

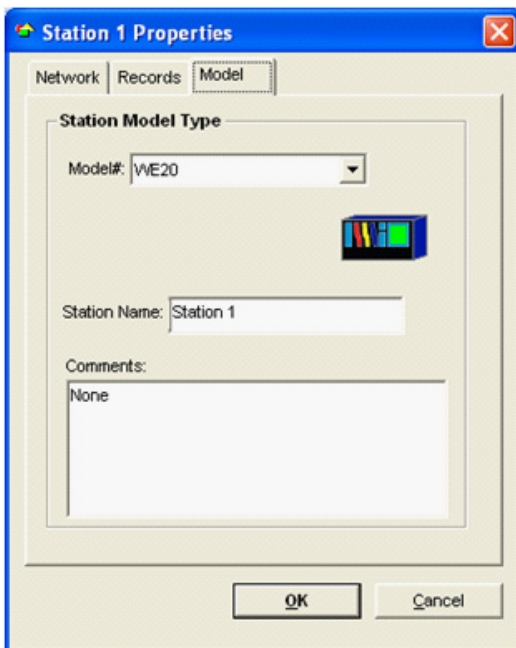
- Open the WATT-Net Data Viewer software



- Right Click on the Station 1 and configure the Network Type to TCP/IP



- Configure the Model type as WE-20



## Step 2

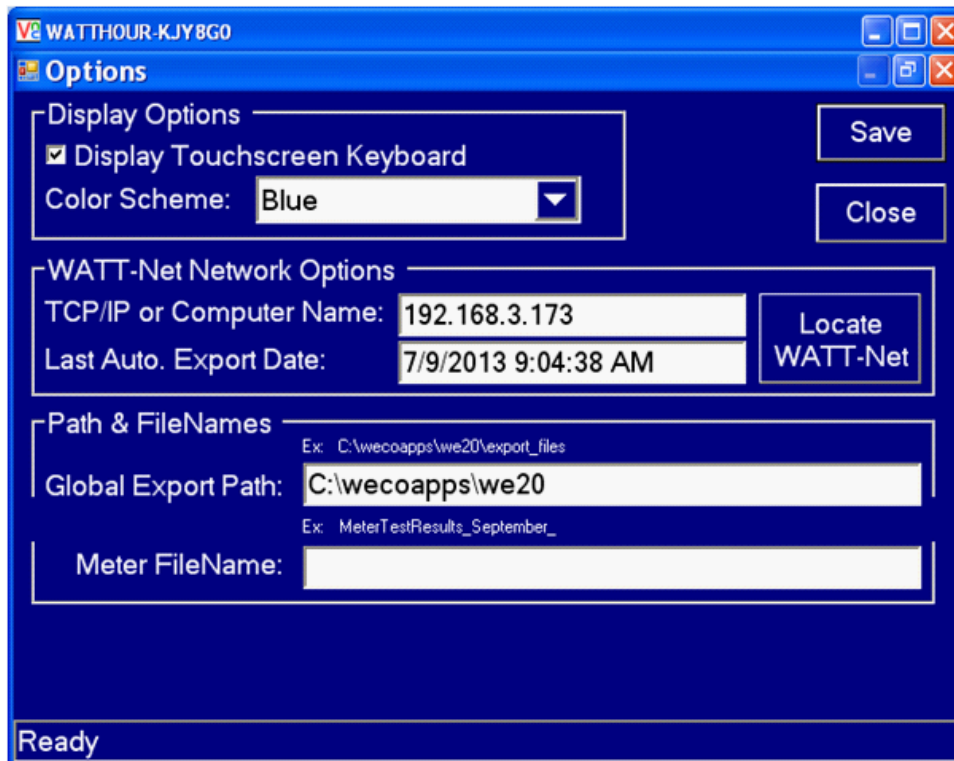
Set up Bantam Plus/WE20 to connect automatically to the field PC via Ethernet cable.

- Connect Ethernet cable to Bantam Plus/WE20 and Field PC

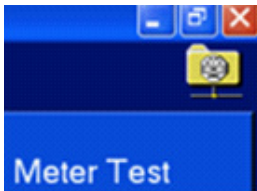
- Open the Main Menu tab



- Open the Administration Icon, Open the Options Icon, Select the Locate WATT-Net Button

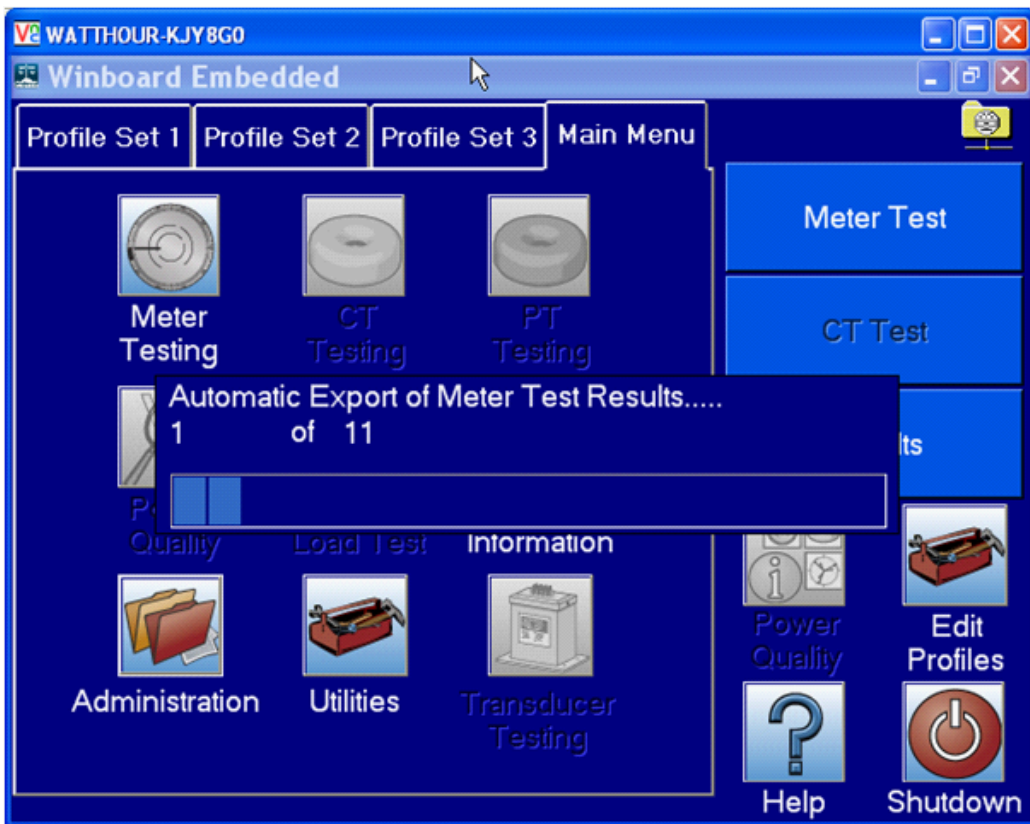


- Click Save in the top right corner.
- Close the Options Window, Close the Administration Window.
- Wait for the Network Icon to Appear in the top Right Corner



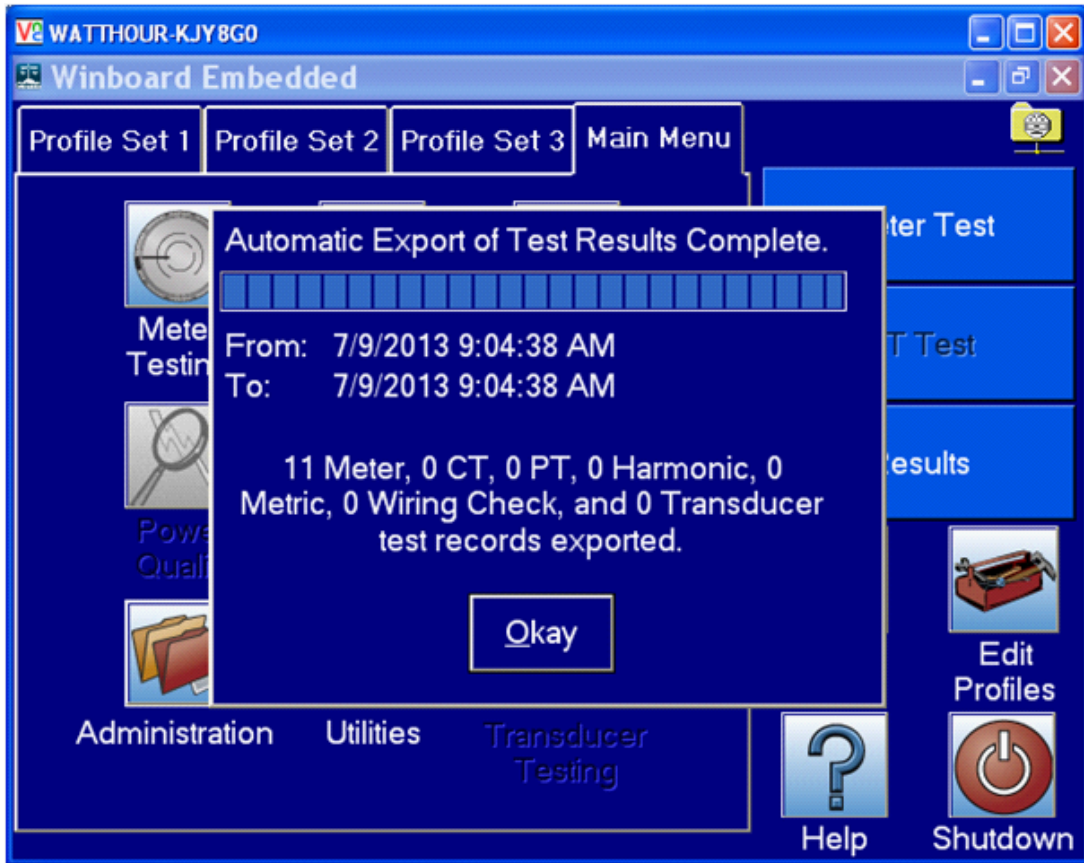
Once the Icon Appears, the Bantam Plus/WE20 has connected to the WATT-Net database on the field PC.

- After connection, the Bantam Plus/WE20 will transfer test results automatically



- When Complete, the Bantam Plus/WE20 will indicate how many records have been transferred

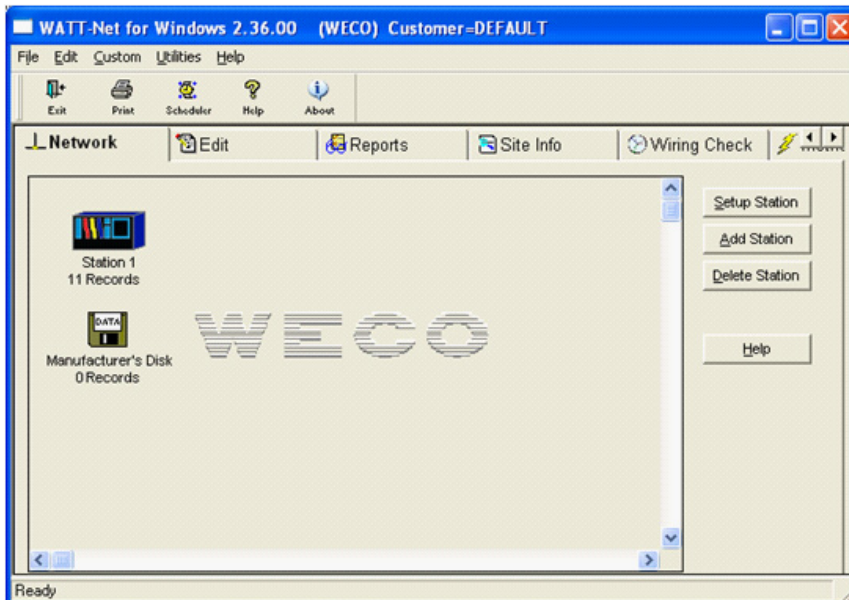
Each test is Date and Time stamped. Only data save since the last export will transfer to the main database.



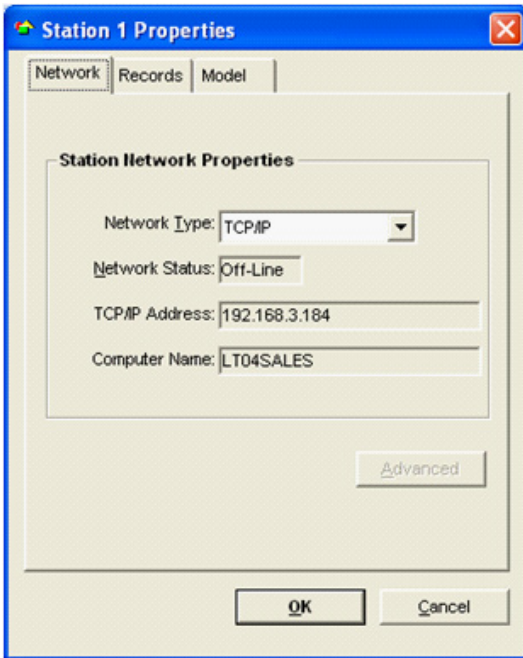
## Step 3

Configure the shop PC WATT-Net Database to accept a TCP/IP connection.

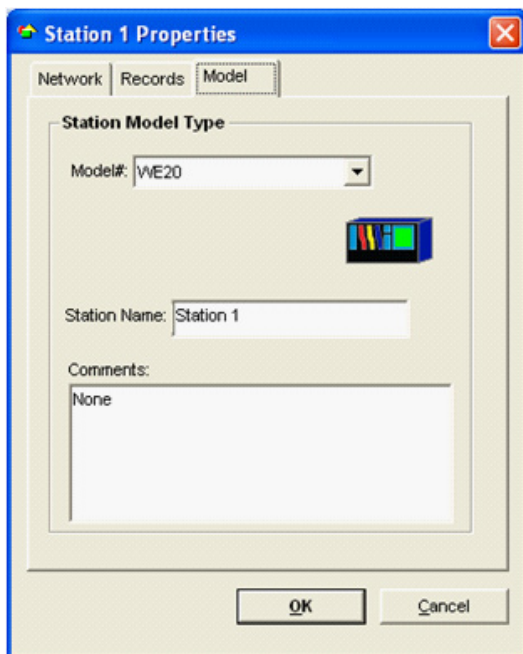
- Open the WATT-Net Data Viewer software



- Right Click on the Station 1 and configure the Network Type to TCP/IP



- Configure the Model type as WE-20

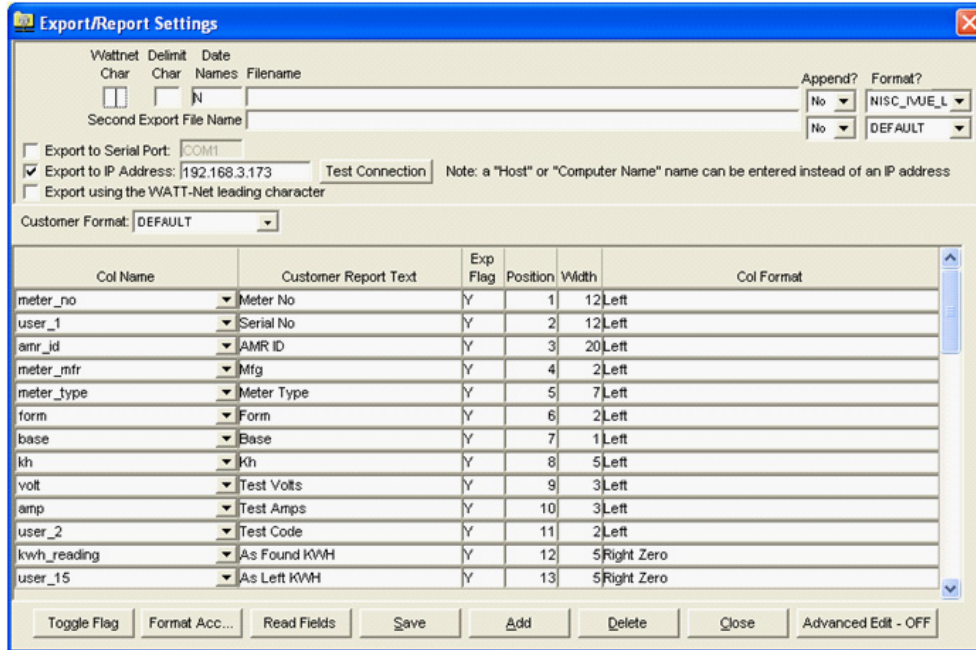


## Step 4

Configure the field PC results for automatic transfer to a shop PC via TCP/IP.

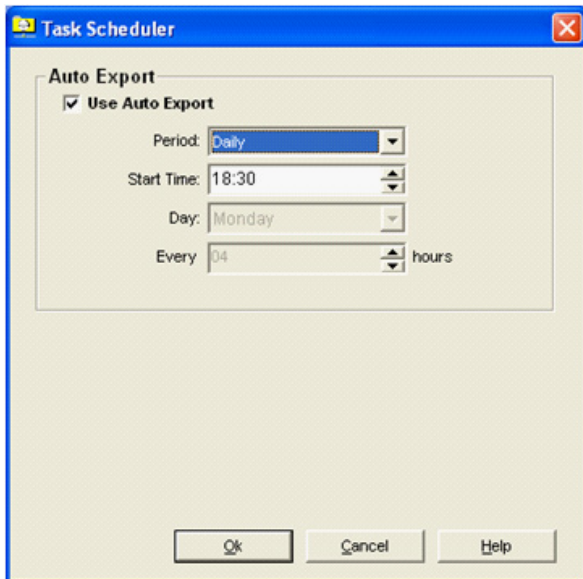
It is necessary that the Bantam Plus/WE20, field PC WATT-Net and shop PC WATT-Net be configured so that the export settings match or the database will not transfer correctly. In this example we are using the default installation with default settings. No changes were required.

- Open export settings. Check the Export to IP Address box. Complete the IP Address for the Shop PC WATT-Net.



It is necessary that a location and file name be selected in the Filename Box at the top.

- Configure the field PC with an automatic Export using the Scheduler.



Configure the settings that best suit your field PC's access time to the shop PC's WATT-Net database.

- Manual Exports will also transfer data if the scheduler's timing is not conducive to your field PC's access to the shop PC's WATT-Net database.