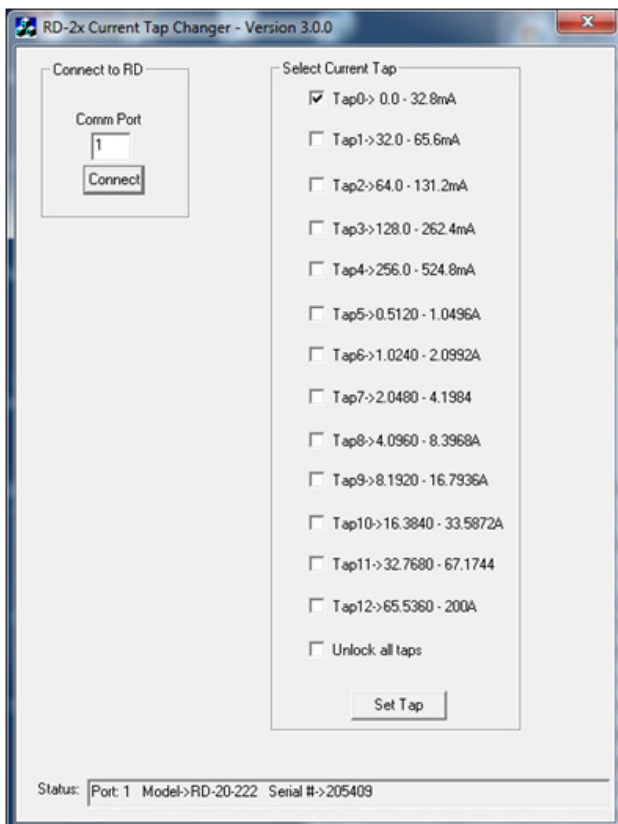


Application Note

Locking RD Current Taps

When using the RD standard to measure waveforms that have multiple zero crossings, the current ranging taps must be locked into the desired current range to achieve accurate results. This can be performed with the following instructions.

- Download the application from the below link: http://www.radianresearch.com/downloadR/Lock_Current_Taps.zip
- This software cannot connect to the RD standard at the same time as other software such as PC Suite. That software will need to be closed and re-opened after the relays are locked into place.
- Extract the application from the zip file.
- Launch the Lock_Current_Taps executable.
- Configure the comm port and select “Connect”.



- When connected, the status at the bottom of the program will indicate the model and serial port of the connected RD standard.
- Based on the test current, select the check box for the desired tap and current range for the RD standard.
- Select “Set Tap” to lock the RD standard on the current tap.
- The RD standard will now remain locked in that tap until it is changed, powered off or by selecting “Unlock all taps” followed by selecting “Set Tap”.
- If running an application such as PC Suite that will need to communicate to the RD standard, the Lock Current Taps application must be closed before the other application is launched.

Limited resources or need a solution quickly?

If you need additional information about your project just contact us, we are here to help. We can support you at any level from telephone support, or on-site solutions for a reasonable price. Contact us at radian@radianresearch.com or call 765-449-5500. Be assured that we want to be your partner in success!

Radian Research, Inc.
www.radianresearch.com

3852 Fortune Drive
Lafayette, Indiana 47905

phone 765-449-5500
fax 765-448-4614

