

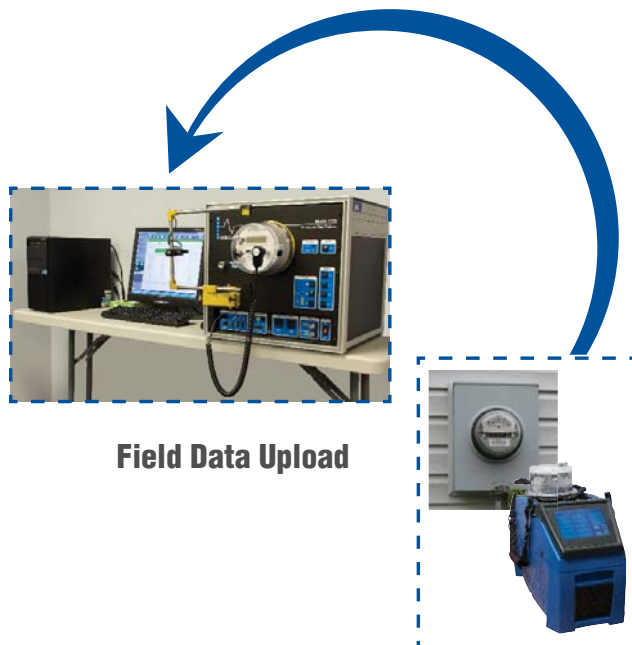
**METER TESTING
CAPTURE RESULTS
STORE DATA**

WATT-Net Basic

WATT-Net Basic™: Meter Testing & Record Keeping

Complementary with RADIANT or WECO hardware

WATT-Net Basic: The meter testing software solution for Utilities. Complementary* with Radian and WECO hardware. WATT-Net Basic is developed on a .NET framework with a secure SQL Server Express database. WATT-Net Basic offers user a range of features including new Winboard 3, an integrated Meter Testing software application. Overall, WATT-Net Basic is a more secure entry level software platform to address your current requirements and the ability to grow into your future needs.



Field Data Upload

Manage meter testing data in one location:

- ▶ Collect and manage all meter testing records in one location
- ▶ Field test data can be automatically synced to the database

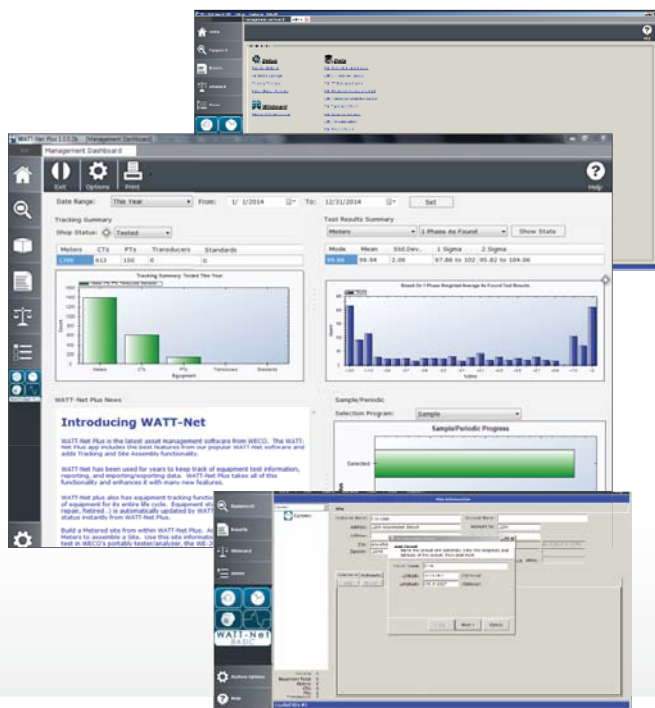
Track device history:

- ▶ For each device, track the date, the time, the technician, test results, and more
- ▶ Attach virtual sticky notes to each device record

Site administration made easy:

- ▶ Manage a series of devices using the Site Administration functionality
- ▶ Track historical snapshots of your sites and devices

Do not see the features you need in WATT-Net Basic, move up to the power of WATT-Net Express, WATT-Net Limit or WATT-Net Plus. An extensive range of features to meet every Utility size and budget.



Software Features: A summary of each WATT-Net software feature is described on the back of this page.

Software Features

	WATT-Net Basic	WATT-Net Express	WATT-Net Limited	WATT-Net Plus
Manual Export of Test Data	●	●	●	●
Powerful Custom Reports	●	●	●	●
Dynamic Sequencing	●	●	●	●
Barcode Scanning	●	●	●	●
New Meter Support	●	●	●	●
CTs, PTs, Transducers, and Standards	●	●	●	●
Site Administration	●	●	●	●
Shop Administration	●	●	●	●
Field Data Upload	●	●	●	●
Two-way Field and Shop Data Synchronization		●	●	●
Unlimited Equipment Sync <i>(Radian Equipment only)</i>		●	●	●
Centralized Database		●	●	●
Proxy Sync (Inter-node Sync)		●	●	●
WECO Legacy Data Conversion		●	●	●
Dataview Configuration		●	●	●
Configurable Manufacturer File Import		●	●	●
NISC Integration		●	●	●
KNOPP CT/PT Data Testing		●	●	●
Enterprise Integration			●	●
Web Reports			●	●
AMI Device Support			●	●
Advanced Reporting Filters			●	●
Manufacturer Online			●	●
Field Assistant			●	●
Shop Assistant			●	●
Device Analytics Management (DAM)			●	●
First Article Verification			●	●
In-Service Sample Management			●	●
New Device Acceptance			●	●
RMA Workflow, Tracking, and Reporting			●	●
Work Order and Inventory Control			●	●
Power Quality Capture			●	●
Site Check Verification			●	●
Shop Test AMI Integration			●	●
Function Testing Automation				●
Advanced Custom Configuration				●

● *Optional modules available for purchase*

Watthour Engineering Company, Inc.
www.radianresearch.com

333 Cross Park Drive
Pearl, Mississippi 39208

Phone 601-933-0900
Fax 601-933-0901

