

WATT-Net

***Powerful, Flexible
and Scalable***

Test and Asset Management Software



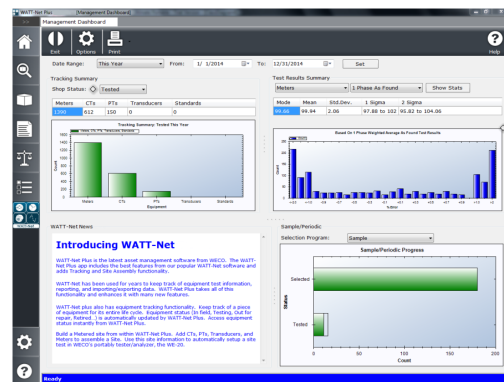
R A D I A N
Research

WATT-Net™ Test and Asset Management Software

Designed by Metering Professionals

WECO Software Solutions, RADIANT's software business unit, pioneered meter shop software for electric utilities over 35 years ago and continues to lead in this arena. **WATT-Net™ Test and Asset Management Software** provides configurable and scalable out-of-the-box solutions to utilities of any size or type. Specifically designed for the metering industry, **WATT-Net** combines powerful functionality with ease of use to deliver a full featured application.

WATT-Net features full lifecycle management of all metering assets to serve the testing and energy measuring needs of meter shops and field-testing operations. The integration of all meter test data enables utilities to leverage all the power of RADIANT hardware solutions, increasing reliability and extending the life of your metering asset.



RADIANT was recently named **Company of the Year** in the **Utilities Asset Management** solutions category. RADIANT received this award in recognition of our knowledge of utility metering, relationships with meter manufacturers and control of industry leading test system hardware. Our excellence in these areas is exemplified by **WATT-Net Test and Asset Management Software**.

Utilities
Asset
Management

RADIANT



Configure

Tailor data sets, compliance sampling and business rules to utilities' specific needs.



Integrate

Integrate with other utility systems through web services, APIs and files with the support of our integration experts.



Flex

As a customer's needs change and grow, the software can change and adapt.



Scale

Effectively serves single operator meter shops and contract testers to large utilities.



Secure

Provides access control at the menu item or editor level. The centralized database adds another layer of security to your system.



Endure

The capabilities and flexibility of WATT-Net guarantee a long service life, and thus provide the best value to customers.



Excel

Everything at RADIANT revolves around being the best and our software solutions fit that criteria.



Discern

Designed by metering experts who have years of industry knowledge developing test and asset management solutions.

One Platform Configurable to Meet YOUR Needs

RADIAN understands a customer's needs change and grow with time. **WATT-Net** adapts to utility business rules to provide a powerful, configurable software solution that can be maintained and managed by the utility themselves to meet their objectives efficiently.

WATT-Net is structured in a modular fashion that enables optimum flexibility and expansion. The foundation of the platform is built on a secure and stable framework for efficient scalability as new features are added.



WATT-Net

WATT-Net is provided at No Charge with EVERY RADIAN Test System. It provides ultimate control of the test hardware while providing essential meter shop and field data management with flexible custom configuration.

WATT-Net is the entry point of test and data management that provides utilities the essentials in meter testing control and management. Build advanced test sequences; organize results; report, import and export data.

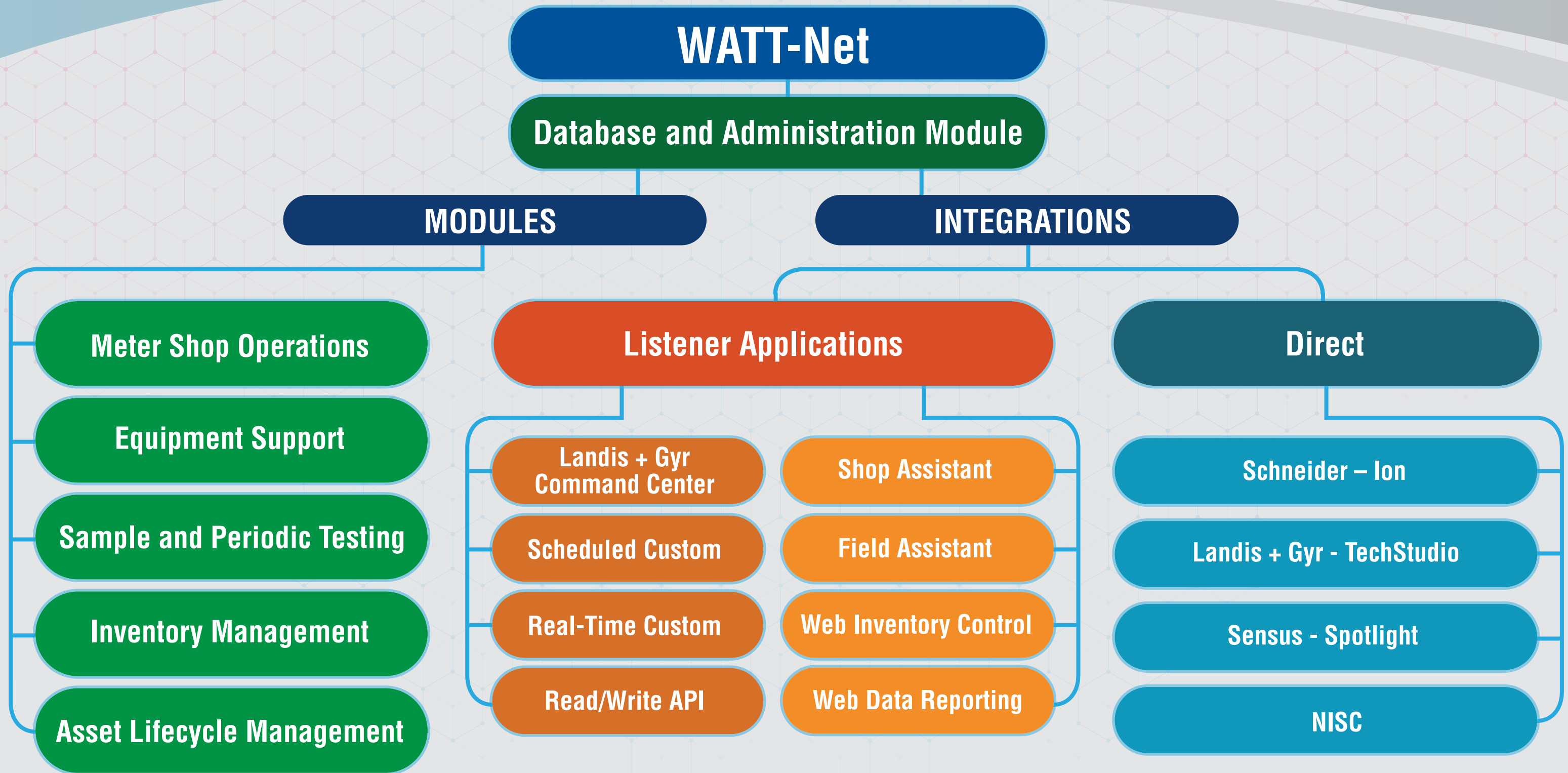
Database and Administration Module

WATT-Net's Database and Administration Module provides security enhancements and central database management capability for a small or large enterprise operation. It provides a powerful, cost-effective solution for Test Data Management and enables expansion of the **WATT-Net** platform into application specific Modules and Integrations.

The **Database and Administration Module** expands the power of **WATT-Net** beyond individual workstations to provide a single repository and managed location for all shop and field data. Multiple workstations share configuration so that a single change in **WATT-Net** can be implemented enterprise wide. Server management is isolated to a single repository for efficiency and ease.

The **Database and Administration Module's** security features allow for flexible configuration to assign group and user permissions for each menu item and editor. Powerful enough to provide ability for complex group settings and allow users to be assigned to multiple groups, yet flexible enough to allow simplified security settings to manage user workflow.

WATT-Net | Test and Asset Management Software



Modules, Integrations and Services

The primary **WATT-Net** structure consists of application focused Modules, Integrations and Services. Once the **Database and Administration Module** is purchased , ANY Modules and/or Integrations can be added to **WATT-Net** providing ultimate flexibility in expanding the platform. Services can be applied wherever desired to assist with **WATT-Net** implementation. Whatever your needs, and no matter the size of your business, RADIANT will work closely with you to ensure your success and maximize the value of your investment by providing you with a tailored solution.



Modules

Meter Shop Operations

The **Meter Shop Operations** module is the ultimate process workflow and test procedure manager. Build business rules to manage and enforce standard operating procedures. Manage and track your sample acceptance testing process utilizing built-in protocols. Populate boxes or pallets in preparation to transfer inventory.

Sample and Periodic Testing

The **Sample and Periodic Testing** module manages your entire meter deployment to build-up Random, In-Service and Periodic sample testing programs that meet best business practices or your regulated testing requirements. Utilize the included ANSI or Milspec sampling protocols to create and track progress of your testing program.

Equipment Support

The **Equipment Support** module provides a complete management solution for organizing and tracking asset repair, replacement, tampering, maintenance and calibration.

Inventory Management

The **Inventory Management** module offers the ability to create buying recommendations based on availability, supply patterns, and seasonality. It allows the understanding of what you have and what you need. It manages the inventory location, status and provides reporting for simplified accounting and tracking for year-end audits.

Asset Lifecycle Management

Designed for Gas and Electric Utilities, this module provides complete asset lifecycle management. Its highly configurable capability allows for easy adoption and standardization throughout the organization. This combines with powerful out-of-the-box features helping utilities operate efficiently without limiting process uniqueness.

Integrations

Simple or complex, **WATT-Net Integrations** provide an array of solutions to send or receive data or statuses to other systems. Real-time or Scheduled transactions via files or APIs into enterprise systems such as SAP, Oracle, IBM or utility developed solutions are enabled by the powerful and intelligent **Listener** Application Server. Integrations into AMI head end for continued updates or local connection to meter platforms for Advanced Functional Testing are also available.

Direct

- **Schneider – Ion**
- **Landis Gyr - TechStudio**
- **Sensus – Spotlight**
- **NISC**

Listener

- **Landis Gyr - Command Center**
- **Scheduled Custom**
- **Real-Time Custom**
- **Read/Write API**

Mobile Web Apps

Secure and manage assets with **Listener** enabled Mobile Web Apps running on Apple's iOS, macOS, Google Android or Microsoft Windows.

- **Field Assistant:** update site records, manage and control test equipment, sync data with WATT-Net.
- **Shop Assistant:** untether personnel and increase efficiency using mobile devices to manage inventory.
- **Web Inventory Control:** automate point-to-point inventory.
- **Web Data Reporting:** preview and download test records from a secure web portal.

Services

The following services are available to assist in various aspects of **WATT-Net** implementation.

- **WECO Legacy Data Conversion**
- **3rd Party Data Conversion**
- **DataView Configuration**
- **Import/Export Configuration**
- **Custom Development**
- **Requirements Gathering**
- **Training**
- **Installation Services**
- **Process Improvement Workshop**
- **Project Management**



Proven

WATT-Net Test and Asset Management Software has been successfully implemented in many utilities of different types including Investor-Owned Utilities, Municipals and Cooperatives. Our proven track record in delivering products on time and on budget, and the number of successful implementations clearly demonstrates that **RADIAN's WECO Software Solutions** leads the field.

Radian Research, Inc.
www.radianresearch.com

3852 Fortune Drive
Lafayette, Indiana 47905

Phone 765-449-5500
Fax 765-448-4614

