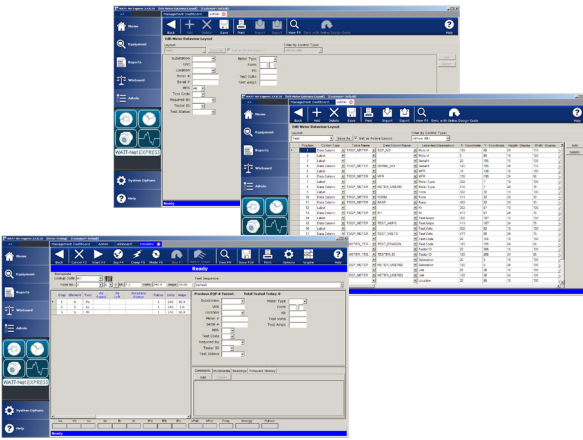


# METER TESTING DATA MANAGEMENT

# WATT-Net Express™

**WATT-Net Express is a powerful and cost effective solution for meter testing data management.**



## Configurable Dataview

- ▶ Display meter device attributes and test data in a customized fashion
- ▶ Make modifications on the fly with no changes to software code necessary
- ▶ Customize faceplate layout

## Centralized Database

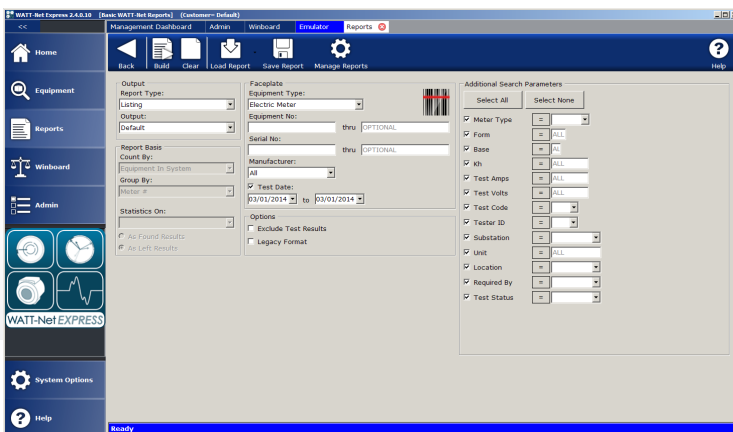


- ▶ All meter testing data, device history, and site data is tracked using a network database
- ▶ Connect an unlimited number of testboards as well as RADIAN and WECO field equipment\*
- ▶ Automatically sync RADIAN and WECO field equipment to the central database when in range of your secure network\*

\*Field Equipment must be Wi-Fi or Ethernet card equipped.

## Site Administration

- ▶ Manage your most valuable customer sites through comprehensive device lists
- ▶ Take snapshots of the site state before and after making modifications to track changes at each site
- ▶ Retain pictures, documentation, diagrams, GPS data and more for each site



## Data Conversion Services



- ▶ Convert your legacy WECO data for use with a modern and secure database
- ▶ 3rd party data services conversion available upon request – contact your sales rep for more information



## KNOPP CT and PT Analyzer Data Management

- ▶ Import data from your CT or PT testing into the WATT-Net Express centralized database
- ▶ Track the testing history including the location of each asset using Site Administration Management



## Software Maintenance and Support

- ▶ Technical support by the experts from the industry's most comprehensive meter testing solution provider
- ▶ Obtain software enhancements as the world of meter testing keeps evolving and new devices hit the market